



National Engineering &
Architectural Services, INC. (NEAS)
2800 Corporate Exchange Dr.
Suite 240
Columbus, Ohio 43231
Office: (614) 714-0299
Fax: (614) 714-0251

LEVEL A TEST HOLE CERTIFICATION FORM

PROJECT NAME: FRA-70-14.05 PROJECT 4B, PID#: 96053
NEAS PROJECT #: 18-0085
PROJECT LOCATION (CTY., CITY, ST.): FRA., COL., I-70 W.B.
FOREMAN/TRUCK: N. MILLER, C. OTTEN, N.L., B.J.
DATE OF EXCAVATION: 09/04/19
WEATHER CONDITIONS: 70° CLEAR (NIGHT)

TEST HOLE #: 1
UTILITY TO BE LOCATED: COMBINED SEWER LINE (FOUND)

CONTROL POINT: CP11 (GROUND)
NORTHING: 711840.5540
EASTING: 1828916.0830
ELEVATION: 737.30

SIZE OF UTILITY: 78"
MATERIAL OF FOUND UTILITY: CONCRETE
THE UTILITY WAS IN GOOD CONDITION
THERE WERE NOT ADDITIONAL UTILITIES IN THE TEST HOLE
SURVEYED ELEVATION TOP OF UTILITY: 734.36
SURVEYED ELEVATION BOTTOM OF UTIL (IF REQ.): N/A
SURVEYED NORTHING TOP OF UTILITY: 711858.0890 (GROUND)
SURVEYED EASTING TOP OF UTILITY: 1828895.2450 (GROUND)
DEPTH OF TOP OF UTILITY FROM SURFACE: 6.3' DEPTH
DIRECTION OF UTILITY LINE: NORTHEAST TO SOUTHWEST
PHOTO IMAGE NUMBERS: 931-932

TEST HOLE LOCATION (PAV., BERM, ETC): GRASS SHOULDER
EXISTING SURFACE GRADE ELEVATION: 740.62
PAVING CONDITION PRIOR TO WORK: N/A
PAVING THICKNESS AND TYPE: N/A
SOIL TYPE: ROCK & DIRT FIELD CONDITIONS: DRY
COLOR OF RIBBON INSTALLED IN TEST HOLE: N/A

FIELD REMARKS: N/A

UTILITY REMARKS: N/A



UTILITY LEGEND

GAS	— G —	TEST HOLE	⊕ ELEC. P.B.
WATER	— W —	FIRE HYDRANT	⊕ POWER POLE
TELEPHONE	— T —	WATER VALVE	⊕ POWER/LIGHT
ELECTRIC	— E —	+	⊕ LIGHT POLE
SANITARY SEWER	— SAN —	⊕ GAS MARKER	⊕ SAN M.H.
STORM SEWER	— SS —	⊕ GAS VALVE	⊕ TRAFFIC P.B.
FIBER OPTIC	— FO —	⊕ F.O. MARKER	⊕ GROUND SHOT
CABLE TV	— CTV —	⊕ UNKNOWN P.B.	
TRAFFIC	— TR —		

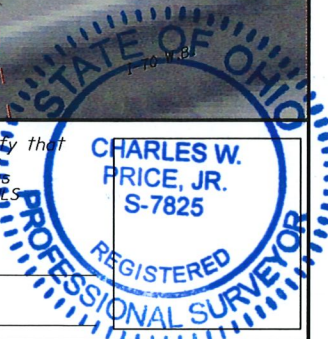
I, Charles W. Price, JR. do hereby certify that the positioning of the utility facilities provided utilizing the Quality Levels was performed in accordance with ODOT's SALS specifications.

Charles W. Price, JR., P.S.

DATE

9/18/2019

CHARLES W.
PRICE, JR.
S-7825





National Engineering &
Architectural Services, INC. (NEAS)
2800 Corporate Exchange Dr.
Suite 240
Columbus, Ohio 43231
Office: (614) 714-0299
Fax: (614) 714-0251

LEVEL A TEST HOLE CERTIFICATION FORM

PROJECT NAME: FRA-70-14.05 PROJECT 4B, PID#: 96053
NEAS PROJECT #: 18-0085
PROJECT LOCATION (CTY., CITY, ST.): FRA., COLUMBUS, S. 3RD ST.
FOREMAN/TRUCK: N. MILLER, A. CROOKS, J.H., N.L., B.J.
DATE OF EXCAVATION: 08/27/19
WEATHER CONDITIONS: 70° CLEAR (NIGHT)

TEST HOLE #: 2
UTILITY TO BE LOCATED: ELECTRIC D.B. (FOUND)

CONTROL POINT: CP100005 (GROUND)
NORTHING: 712030.9480
EASTING: 1829320.0700
ELEVATION: 753.89

SIZE OF UTILITY: 2.5' WIDE
MATERIAL OF FOUND UTILITY: CONCRETE
THE UTILITY WAS IN GOOD CONDITION
THERE WERE NOT ADDITIONAL UTILITIES IN THE TEST HOLE
SURVEYED ELEVATION TOP OF S. EDGE UTILITY: 747.65
SURVEYED ELEVATION BOTTOM OF UTIL (IF REQ.): N/A
SURVEYED NORTHING TOP OF S. EDGE UTILITY: 711974.6290 (GROUND)
SURVEYED EASTING TOP OF S. EDGE UTILITY: 1829351.3830 (GROUND)
DEPTH OF TOP OF UTILITY FROM SURFACE: 5.8' DEPTH
DIRECTION OF UTILITY LINE: EAST TO WEST
PHOTO IMAGE NUMBERS: 167-168

TEST HOLE LOCATION (PAV., BERM, ETC): PAVED STREET
EXISTING SURFACE GRADE ELEVATION: 753.44
PAVING CONDITION PRIOR TO WORK: GOOD
PAVING THICKNESS AND TYPE: 0.35' BLACKTOP, 0.8' CONC.
SOIL TYPE: ROCK & DIRT FIELD CONDITIONS: WET
COLOR OF RIBBON INSTALLED IN TEST HOLE: N/A

FIELD REMARKS: N/A

UTILITY REMARKS: N/A



UTILITY LEGEND

GAS	— G —	TEST HOLE	— ELEC. P.B. —
WATER	— W —	FIRE HYDRANT	— POWER POLE —
TELEPHONE	— T —	WATER VALVE	— POWER/LIGHT —
ELECTRIC	— E —	— G — GAS MARKER	— LIGHT POLE —
SANITARY SEWER	— SAN —	— G — GAS VALVE	— SAN M.H. —
STORM SEWER	— SS —	— F.O. — F.O. MARKER	— TRAFFIC P.B. —
FIBER OPTIC	— FO —	— U — UNKNOWN P.B.	— X — GROUND SHOT
CABLE TV	— CTV —		
TRAFFIC	— TR —		

I, Charles W. Price, JR. do hereby certify that the positioning of the utility facilities provided utilizing the Quality Levels was performed in accordance with ODOT's SUTS specifications.

CHARLES W.
PRICE, JR.
S-7825

Charles W. Price, JR., P.S.

DATE 9/18/2019

REGISTERED
PROFESSIONAL SURVEYOR



National Engineering &
Architectural Services, INC. (NEAS)
2800 Corporate Exchange Dr.
Suite 240
Columbus, Ohio 43231
Office: (614) 714-0299
Fax: (614) 714-0251

LEVEL A TEST HOLE CERTIFICATION FORM

PROJECT NAME: FRA-70-14.05 PROJECT 4B, PID#: 96053
NEAS PROJECT #: 18-0085
PROJECT LOCATION (CTY., CITY, ST.): FRA., COLUMBUS, S. 3RD ST.
FOREMAN/TRUCK: N. MILLER, A. CROOKS, J.H., N.L., B.J.
DATE OF EXCAVATION: 08/20/19
WEATHER CONDITIONS: 75° (NIGHT)

TEST HOLE #: 3
UTILITY TO BE LOCATED: WATER LINE (NOT FOUND)

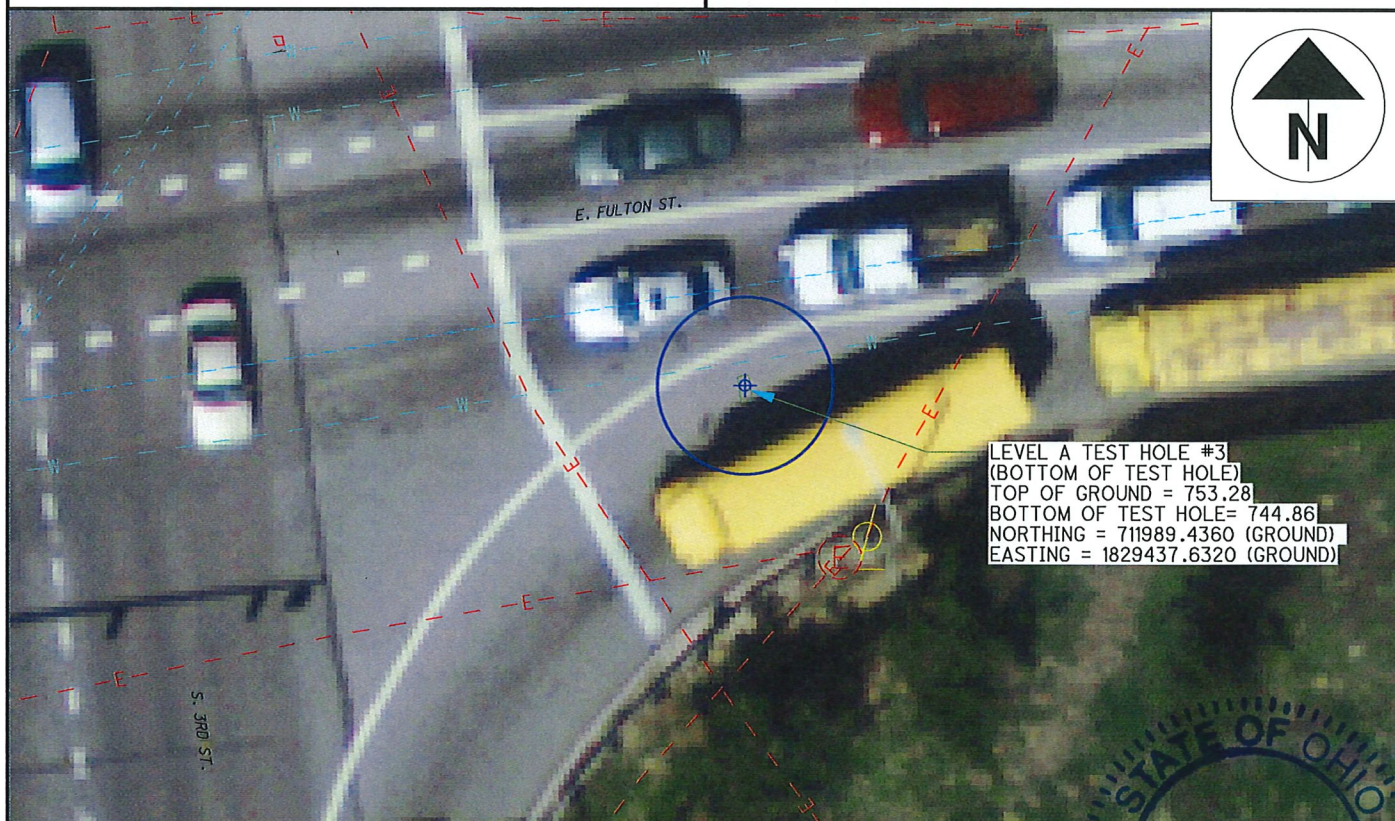
CONTROL POINT: CP100004 (GROUND)
NORTHING: 712032.2480
EASTING: 1829404.7190
ELEVATION: 753.42

SIZE OF UTILITY: N/A
MATERIAL OF FOUND UTILITY: N/A
THE UTILITY N/A IN GOOD CONDITION
THERE WERE NOT ADDITIONAL UTILITIES IN THE TEST HOLE
SURVEYED ELEVATION BOTTOM OF TEST HOLE: 744.86
SURVEYED ELEVATION BOTTOM OF UTIL (IF REQ.): N/A
SURVEYED NORTHING BOTTOM OF HOLE: 711989.4360 (GROUND)
SURVEYED EASTING BOTTOM OF HOLE: 1829437.6320 (GROUND)
DEPTH OF BOTTOM OF HOLE FROM SURFACE: 8.4' DEPTH
DIRECTION OF UTILITY LINE: N/A
PHOTO IMAGE NUMBERS: 688

TEST HOLE LOCATION (PAV., BERM, ETC): PAVED STREET
EXISTING SURFACE GRADE ELEVATION: 753.28
PAVING CONDITION PRIOR TO WORK: GOOD
PAVING THICKNESS AND TYPE: 0.3' BLACKTOP, 0.8' CONC.
SOIL TYPE: ROCK & CLAY FIELD CONDITIONS: DRY
COLOR OF RIBBON INSTALLED IN TEST HOLE: N/A

FIELD REMARKS: DUG TO 8.4' & PROBED TO 9.0'. NO UTILITY FOUND

UTILITY REMARKS: WATER LINE MARKED BY CITY



LEVEL A TEST HOLE #3
(BOTTOM OF TEST HOLE)
TOP OF GROUND = 753.28
BOTTOM OF TEST HOLE = 744.86
NORTHING = 711989.4360 (GROUND)
EASTING = 1829437.6320 (GROUND)

UTILITY LEGEND

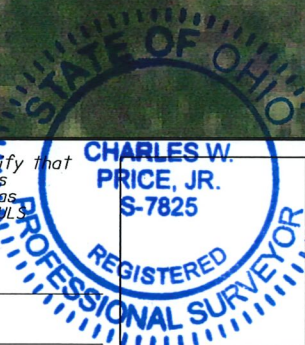
GAS	— G —	TEST HOLE	— ELEC. P.B. —
WATER	— W —	FIRE HYDRANT	— POWER POLE —
TELEPHONE	— T —	WATER VALVE	— POWER/LIGHT —
ELECTRIC	— E —	GAS MARKER	— LIGHT POLE —
SANITARY SEWER	— SAN —	GAS VALVE	— SAN M.H. —
STORM SEWER	— SS —	F.O. MARKER	— TRAFFIC P.B. —
FIBER OPTIC	— FO —	UNKNOWN P.B.	— GROUND SHOT —
CABLE TV	— CTV —		
TRAFFIC	— TR —		

I, Charles W. Price, JR. do hereby certify that
the positioning of the utility facilities
provided utilizing the Quality Levels was
performed in accordance with ODOT's SWS
specifications.

Charles W. Price, JR., P.S.

DATE 9/18/2019

CHARLES W.
PRICE, JR.
S-7825





National Engineering &
Architectural Services, INC. (NEAS)
2800 Corporate Exchange Dr.
Suite 240
Columbus, Ohio 43231
Office: (614) 714-0299
Fax: (614) 714-0251

LEVEL A TEST HOLE CERTIFICATION FORM

PROJECT NAME: FRA-70-14.05 PROJECT 4B, PID#: 96053
NEAS PROJECT #: 18-0085
PROJECT LOCATION (CTY., CITY, ST.): FRA., COLUMBUS, S. 3RD ST.
FOREMAN/TRUCK: N. MILLER, A. CROOKS, J.H., N.L., B.J.
DATE OF EXCAVATION: 08/26/19
WEATHER CONDITIONS: 76° RAIN (NIGHT)

TEST HOLE #: 3A
UTILITY TO BE LOCATED: WATER LINE (FOUND)

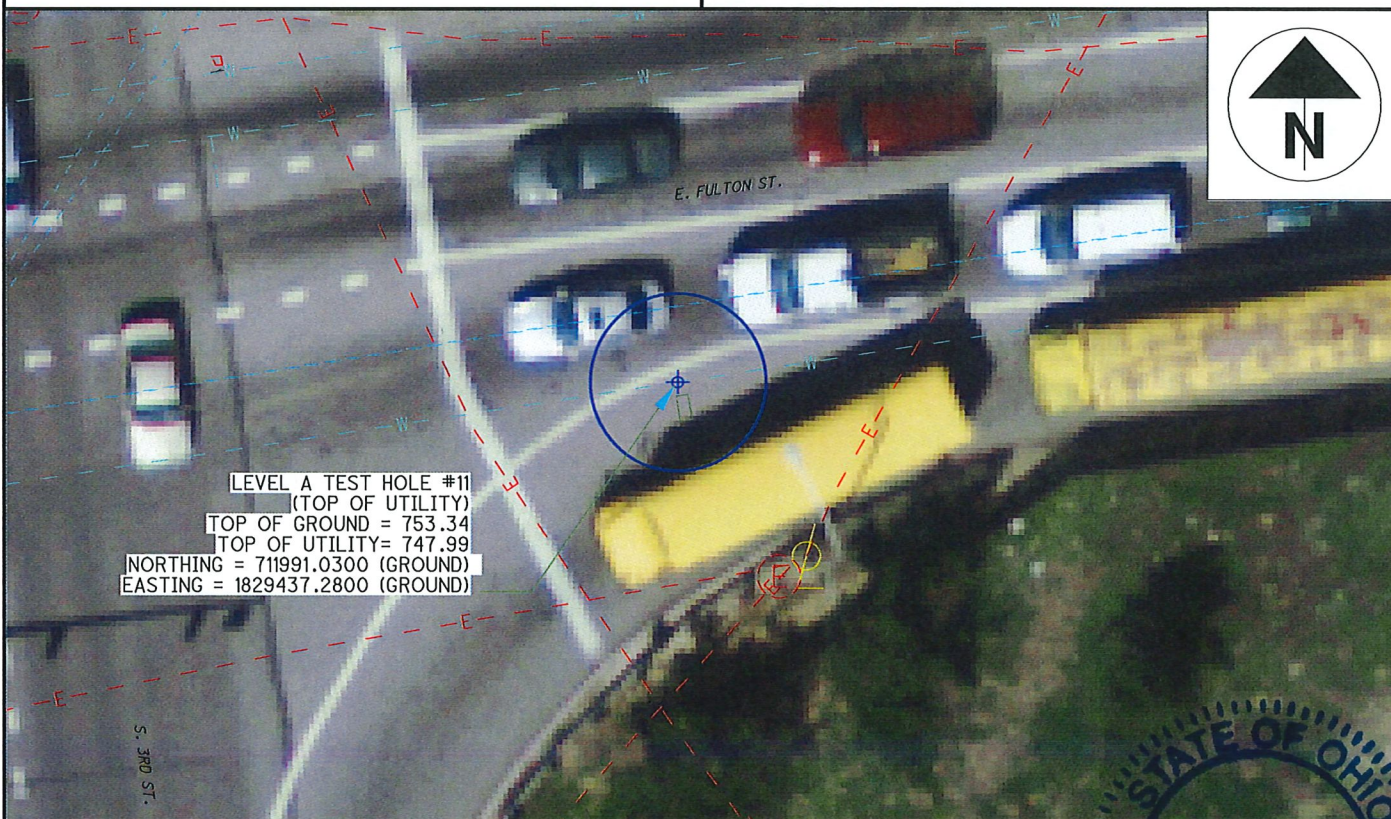
CONTROL POINT: CP100005 (GROUND)
NORTHING: 712030.9480
EASTING: 1829320.0700
ELEVATION: 753.89

SIZE OF UTILITY: 16"
MATERIAL OF FOUND UTILITY: STEEL
THE UTILITY WAS IN GOOD CONDITION
THERE WERE NOT ADDITIONAL UTILITIES IN THE TEST HOLE
SURVEYED ELEVATION TOP OF UTILITY: 747.99
SURVEYED ELEVATION BOTTOM OF UTIL (IF REQ.): N/A
SURVEYED NORTHING TOP OF UTILITY: 711991.0300 (GROUND)
SURVEYED EASTING TOP OF UTILITY: 1829437.2800 (GROUND)
DEPTH OF TOP OF UTILITY FROM SURFACE: 5.4' DEPTH
DIRECTION OF UTILITY LINE: EAST TO WEST
PHOTO IMAGE NUMBERS: 161-162

TEST HOLE LOCATION (PAV., BERM, ETC): PAVED STREET
EXISTING SURFACE GRADE ELEVATION: 753.34
PAVING CONDITION PRIOR TO WORK: GOOD
PAVING THICKNESS AND TYPE: 0.3' BLACKTOP, 0.8' CONC.
SOIL TYPE: DIRT & ROCK FIELD CONDITIONS: WET
COLOR OF RIBBON INSTALLED IN TEST HOLE: N/A

FIELD REMARKS: N/A

UTILITY REMARKS: N/A



UTILITY LEGEND

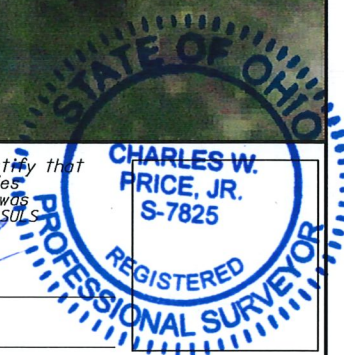
GAS	— G —	TEST HOLE	⊗ ELEC. P.B.
WATER	— W —	FIRE HYDRANT	⊗ POWER POLE
TELEPHONE	— T —	WATER VALVE	⊗ POWER/LIGHT
ELECTRIC	— E —	⊕ GAS MARKER	⊕ LIGHT POLE
SANITARY SEWER	— SAN —	⊕ GAS VALVE	⊕ SAN M.H.
STORM SEWER	— SS —	⊕ F.O. MARKER	⊕ TRAFFIC P.B.
FIBER OPTIC	— FO —	⊕ UNKNOWN P.B.	⊕ GROUND SHOT
CABLE TV	— CTV —		
TRAFFIC	— TR —		

I, Charles W. Price, JR. do hereby certify that the positioning of the utility facilities provided utilizing the Quality Levels was performed in accordance with ODOT's SLS specifications.

Charles W. Price, JR., P.S.

DATE

9/18/2019





National Engineering &
Architectural Services, INC. (NEAS)
2800 Corporate Exchange Dr.
Suite 240
Columbus, Ohio 43231
Office: (614) 714-0299
Fax: (614) 714-0251

LEVEL A TEST HOLE CERTIFICATION FORM

PROJECT NAME: FRA-70-14.05 PROJECT 4B, PID#: 96053
NEAS PROJECT #: 18-0085
PROJECT LOCATION (CTY., CITY, ST.): FRA., COLUMBUS, S. 3RD ST.
FOREMAN/TRUCK: N. MILLER, A. CROOKS, J.H., N.L., B.J.
DATE OF EXCAVATION: 08/21/19
WEATHER CONDITIONS: 80° (NIGHT)

TEST HOLE #: 4
UTILITY TO BE LOCATED: ELECTRIC D.B. (FOUND) (A)
TRAFFIC LINE (FOUND) (B)

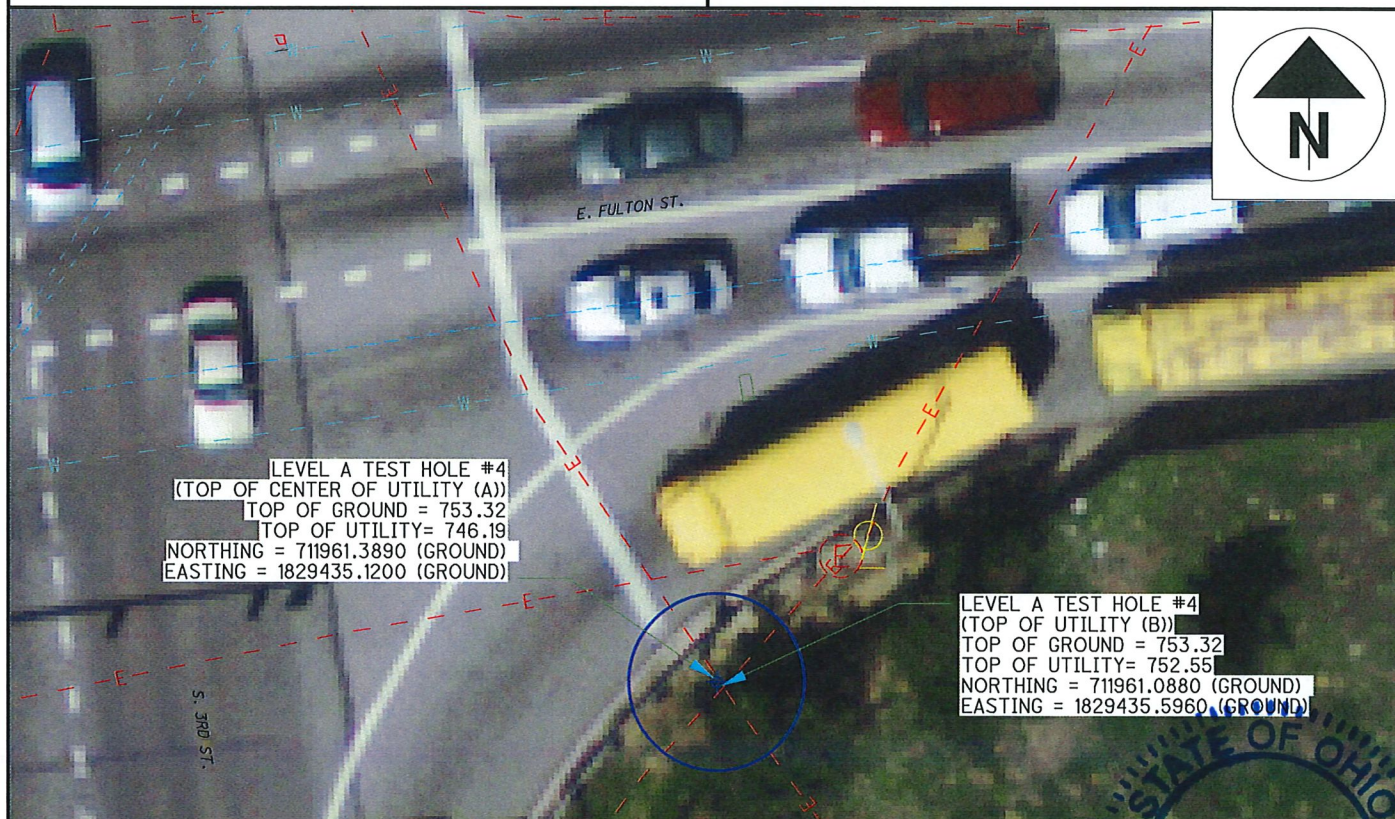
CONTROL POINT: CP100005 (GROUND)
NORTHING: 712030.9480
EASTING: 1829320.0700
ELEVATION: 753.89

SIZE OF UTILITY: 18" WIDE (A), 2" (B)
MATERIAL OF FOUND UTILITY: CONCRETE (A), STEEL (B)
THE UTILITY WAS IN GOOD CONDITION
THERE WERE ADDITIONAL UTILITIES IN THE TEST HOLE
SURVEYED ELEVATION TOP OF UTILITY: 746.19 (A), 752.55 (B)
SURVEYED ELEVATION BOTTOM OF UTIL (IF REQ.): N/A
SURVEYED NORTHING TOP OF UTILITY: *SEE BELOW* (GROUND)
SURVEYED EASTING TOP OF UTILITY: *SEE BELOW* (GROUND)
DEPTH OF TOP OF UTILITY FROM SURFACE: 7.1' DEPTH (A), 0.8' (B)
DIRECTION OF UTILITY LINE: N. TO S. (A), E. TO W. (B)
PHOTO IMAGE NUMBERS: 690-691

TEST HOLE LOCATION (PAV., BERM, ETC): GRASS SHOULDER
EXISTING SURFACE GRADE ELEVATION: 753.32
PAVING CONDITION PRIOR TO WORK: N/A
PAVING THICKNESS AND TYPE: N/A
SOIL TYPE: ROCK & DIRT FIELD CONDITIONS: DRY
COLOR OF RIBBON INSTALLED IN TEST HOLE: N/A

FIELD REMARKS: N/A

UTILITY REMARKS: CONFIRMED 18" CAP PER AEP REPRESENTATIVE ON SITE.



UTILITY LEGEND

GAS	— G —	TEST HOLE	⊗ ELEC. P.B.
WATER	— W —	FIRE HYDRANT	⊕ POWER POLE
TELEPHONE	— T —	WATER VALVE	⊕ POWER/LIGHT
ELECTRIC	— E —	⊕ GAS MARKER	⊕ LIGHT POLE
SANITARY SEWER	— SAN —	⊕ GAS VALVE	⊕ SAN M.H.
STORM SEWER	— S —	⊕ F.O. MARKER	⊕ TRAFFIC P.B.
FIBER OPTIC	— FO —	⊕ UNKNOWN P.B.	⊕ GROUND SHOT
CABLE TV	— CTV —		
TRAFFIC	— TR —		

I, Charles W. Price, JR. do hereby certify that the positioning of the utility facilities provided utilizing the Quality Levels was performed in accordance with ODOT's SLS specifications.

Charles W. Price, JR., P.S.

DATE 9/18/2019

CHARLES W.
PRICE, JR.
S-7825

REGISTERED
PROFESSIONAL SURVEYOR



National Engineering &
Architectural Services, INC. (NEAS)
2800 Corporate Exchange Dr.
Suite 240
Columbus, Ohio 43231
Office: (614) 714-0299
Fax: (614) 714-0251

LEVEL A TEST HOLE CERTIFICATION FORM

PROJECT NAME: FRA-70-14.05 PROJECT 4B, PID#: 96053
NEAS PROJECT #: 18-0085
PROJECT LOCATION (CTY., CITY, ST.): FRA., COL., E. FULTON ST.,
FOREMAN/TRUCK: N. MILLER, C. OTTEN, N.L., B.J.,
DATE OF EXCAVATION: 09/03/19
WEATHER CONDITIONS: 70° CLEAR (NIGHT)

TEST HOLE #: 5
UTILITY TO BE LOCATED: COMBINED SEWER LINE (FOUND)

CONTROL POINT: CP8 (GROUND)
NORTHING: 711863.6200
EASTING: 1829079.268
ELEVATION: 743.37

SIZE OF UTILITY: 96"
MATERIAL OF FOUND UTILITY: CONCRETE
THE UTILITY WAS IN GOOD CONDITION
THERE WERE NOT ADDITIONAL UTILITIES IN THE TEST HOLE
SURVEYED ELEVATION TOP OF UTILITY: 727.21
SURVEYED ELEVATION BOTTOM OF UTIL (IF REQ.): N/A
SURVEYED NORTHING TOP OF UTILITY: 711930.8940 (GROUND)
SURVEYED EASTING TOP OF UTILITY: 1829499.9850 (GROUND)
DEPTH OF TOP OF UTILITY FROM SURFACE: 7.9' DEPTH
DIRECTION OF UTILITY LINE: EAST TO WEST
PHOTO IMAGE NUMBERS: 926-928

TEST HOLE LOCATION (PAV., BERM, ETC): GRASS SHOULDER
EXISTING SURFACE GRADE ELEVATION: 735.10
PAVING CONDITION PRIOR TO WORK: N/A
PAVING THICKNESS AND TYPE: N/A
SOIL TYPE: ROCK & DIRT FIELD CONDITIONS: DRY
COLOR OF RIBBON INSTALLED IN TEST HOLE: N/A

FIELD REMARKS: N/A

UTILITY REMARKS: N/A

E. FULTON ST.



LEVEL A TEST HOLE #5
(TOP OF UTILITY)
TOP OF GROUND = 735.10
TOP OF UTILITY = 727.21
NORTHING = 711930.8940 (GROUND)
EASTING = 1829499.9850 (GROUND)

UTILITY LEGEND

GAS	— G —	TEST HOLE	— ELEC. P.B. —
WATER	— W —	FIRE HYDRANT	— POWER POLE —
TELEPHONE	— T —	WATER VALVE	— POWER/LIGHT —
ELECTRIC	— E —	GAS MARKER	— LIGHT POLE —
SANITARY SEWER	— SAN —	GAS VALVE	— SAN M.H. —
STORM SEWER	— FO —	F.O. MARKER	— TRAFFIC P.B. —
FIBER OPTIC	— CTV —	UNKNOWN P.B.	— GROUND SHOT —
CABLE TV	— TR —		
TRAFFIC			

I, Charles W. Price, JR. do hereby certify that
the positioning of the utility facilities
provided utilizing the Quality Levels was
performed in accordance with ODOT's SLS
specifications.

Charles W. Price, JR., P.S.
DATE 9/18/2019

CHARLES W.
PRICE, JR.
S-7825

REGISTERED

PROFESSIONAL SURVEYOR



National Engineering &
Architectural Services, INC. (NEAS)
2800 Corporate Exchange Dr.
Suite 240
Columbus, Ohio 43231
Office: (614) 714-0299
Fax: (614) 714-0251

LEVEL A TEST HOLE CERTIFICATION FORM

PROJECT NAME: FRA-70-14.05 PROJECT 4B, PID#: 96053
NEAS PROJECT #: 18-0085
PROJECT LOCATION (CTY., CITY, ST.): FRA., COL., S. 3RD ST TO I70 EB
FOREMAN/TRUCK: N. MILLER, A. CROOKS, J.H., N.L., B.J.
DATE OF EXCAVATION: 08/14/19
WEATHER CONDITIONS: 90° SUNNY

TEST HOLE #: 6
UTILITY TO BE LOCATED: WATER LINE (NOT FOUND)

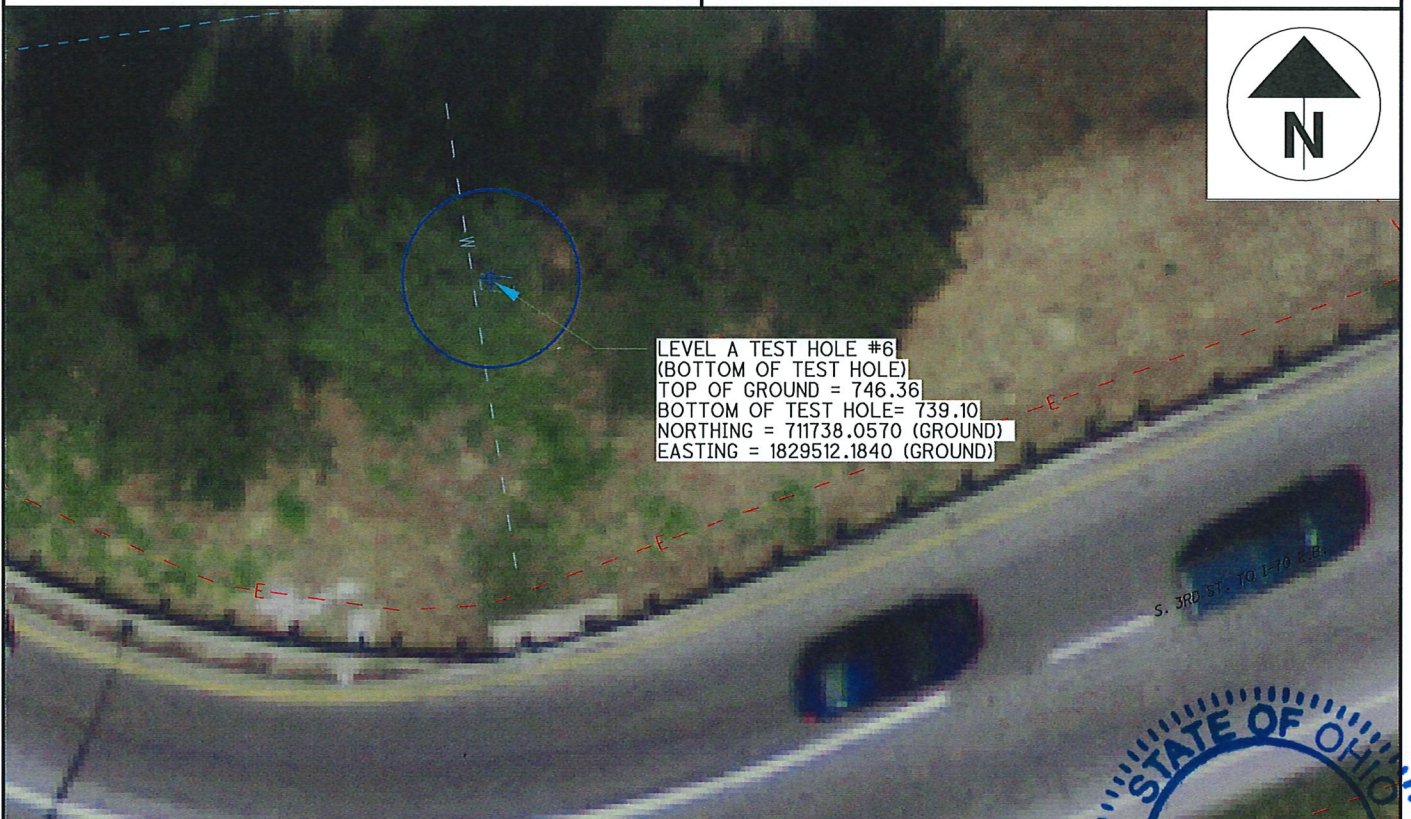
CONTROL POINT: CP17 (GROUND)
NORTHING: 711681.8760
EASTING: 1829372.9600
ELEVATION: 750.67

SIZE OF UTILITY: N/A
MATERIAL OF FOUND UTILITY: N/A
THE UTILITY N/A IN GOOD CONDITION
THERE WERE NOT ADDITIONAL UTILITIES IN THE TEST HOLE
SURVEYED ELEVATION BOTTOM OF TEST HOLE: 739.10
SURVEYED ELEVATION BOTTOM OF UTIL (IF REQ.): N/A
SURVEYED NORTHING BOTTOM OF HOLE: 711738.0570 (GROUND)
SURVEYED EASTING BOTTOM OF HOLE: 1829512.1840 (GROUND)
DEPTH OF BOTTOM OF HOLE FROM SURFACE: 7.3' DEPTH
DIRECTION OF UTILITY LINE: N/A
PHOTO IMAGE NUMBERS: 674-676

TEST HOLE LOCATION (PAV., BERM, ETC): GRASS SHOULDER
EXISTING SURFACE GRADE ELEVATION: 746.36
PAVING CONDITION PRIOR TO WORK: N/A
PAVING THICKNESS AND TYPE: N/A
SOIL TYPE: DIRT & ROCK FIELD CONDITIONS: DRY
COLOR OF RIBBON INSTALLED IN TEST HOLE: N/A

FIELD REMARKS: N/A

UTILITY REMARKS: WATER LINE MARKED BY CITY



UTILITY LEGEND

GAS	— G —	TEST HOLE	⊕ ELEC. P.B.
WATER	— W —	FIRE HYDRANT	⊕ POWER POLE
TELEPHONE	— T —	WATER VALVE	⊕ POWER/LIGHT
ELECTRIC	— E —	⊕ GAS MARKER	⊕ LIGHT POLE
SANITARY SEWER	— SAN —	⊕ GAS VALVE	⊕ SAN M.H.
STORM SEWER	— FO —	⊕ F.O. MARKER	⊕ TRAFFIC P.B.
FIBER OPTIC	— CTV —	⊕ UNKNOWN P.B.	⊕ GROUND SHOT
CABLE TV	— TR —		
TRAFFIC			

I, Charles W. Price, JR. do hereby certify that the positioning of the utility facilities provided utilizing the Quality Levels was performed in accordance with ODOT's SULS specifications.

Charles W. Price, JR., P.S.

DATE 9/18/2019

CHARLES W.
PRICE, JR.
S-7825

REGISTERED
PROFESSIONAL SURVEYOR



National Engineering &
Architectural Services, INC. (NEAS)
2800 Corporate Exchange Dr.
Suite 240
Columbus, Ohio 43231
Office: (614) 714-0299
Fax: (614) 714-0251

LEVEL A TEST HOLE CERTIFICATION FORM

PROJECT NAME: FRA-70-14.05 PROJECT 4B, PID#: 96053
NEAS PROJECT #: 18-0085
PROJECT LOCATION (CTY., CITY, ST.): FRA., COL., S. 3RD ST TO 170 EB
FOREMAN/TRUCK: N. MILLER, C. OTTEN, N.L., B.J.
DATE OF EXCAVATION: 09/05/19
WEATHER CONDITIONS: 80° SUNNY

TEST HOLE #: 6A
UTILITY TO BE LOCATED: WATER LINE (FOUND)

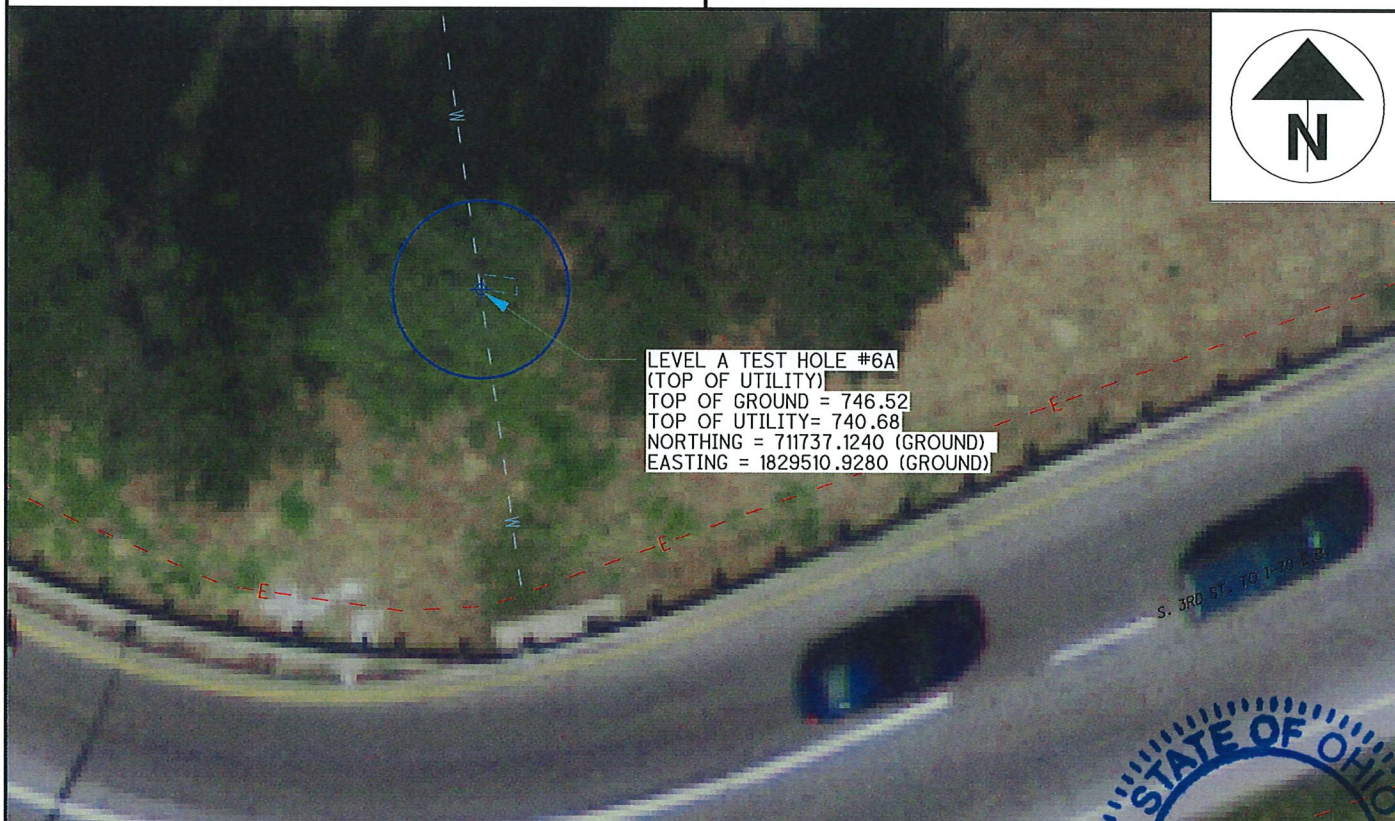
CONTROL POINT: 200000 (GROUND)
NORTHING: 711667.4590
EASTING: 1829508.3320
ELEVATION: 748.15

SIZE OF UTILITY: 16"
MATERIAL OF FOUND UTILITY: STEEL
THE UTILITY WAS IN GOOD CONDITION
THERE WERE NOT ADDITIONAL UTILITIES IN THE TEST HOLE
SURVEYED ELEVATION TOP OF UTILITY: 740.68
SURVEYED ELEVATION BOTTOM OF UTIL (IF REQ.): N/A
SURVEYED NORTHING TOP OF UTILITY: 711737.1240 (GROUND)
SURVEYED EASTING TOP OF UTILITY: 1829510.9280 (GROUND)
DEPTH OF TOP OF UTILITY FROM SURFACE: 5.8' DEPTH
DIRECTION OF UTILITY LINE: NORTH TO SOUTH
PHOTO IMAGE NUMBERS: 937-939

TEST HOLE LOCATION (PAV., BERM, ETC): GRASS SHOULDER
EXISTING SURFACE GRADE ELEVATION: 746.52
PAVING CONDITION PRIOR TO WORK: N/A
PAVING THICKNESS AND TYPE: N/A
SOIL TYPE: DIRT & ROCK FIELD CONDITIONS: DRY
COLOR OF RIBBON INSTALLED IN TEST HOLE: N/A

FIELD REMARKS: N/A

UTILITY REMARKS: N/A



UTILITY LEGEND

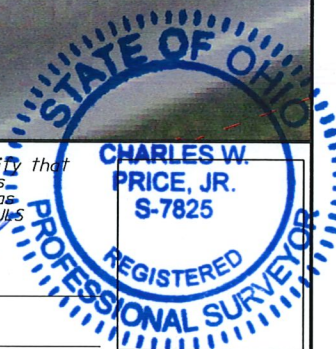
GAS	— G —	TEST HOLE	⊗ ELEC. P.B.
WATER	— W —	FIRE HYDRANT	⊕ POWER POLE
TELEPHONE	— T —	WATER VALVE	⊕ POWER/LIGHT
ELECTRIC	— E —	⊕ GAS MARKER	⊕ LIGHT POLE
SANITARY SEWER	— SAN —	⊕ GAS VALVE	⊕ SAN M.H.
STORM SEWER	— SS —	⊕ F.O. MARKER	⊕ TRAFFIC P.B.
FIBER OPTIC	— FO —	⊕ UNKNOWN P.B.	⊕ GROUND SHOT
CABLE TV	— CTV —		
TRAFFIC	— TR —		

I, Charles W. Price, JR. do hereby certify that the positioning of the utility facilities provided utilizing the Quality Levels was performed in accordance with ODOT's SURS specifications.

Charles W. Price, JR., P.S.

DATE 9/18/2019

CHARLES W.
PRICE, JR.
S-7825





National Engineering &
Architectural Services, INC. (NEAS)
2800 Corporate Exchange Dr.
Suite 240
Columbus, Ohio 43231
Office: (614) 714-0299
Fax: (614) 714-0251

LEVEL A TEST HOLE CERTIFICATION FORM

PROJECT NAME: FRA-70-14.05 PROJECT 4B, PID#: 96053
NEAS PROJECT #: 18-0085
PROJECT LOCATION (CTY., CITY, ST.): FRA., COLUMBUS, S. 4TH ST.
FOREMAN/TRUCK: N. MILLER, A. CROOKS, J.H., N.L., B.J.
DATE OF EXCAVATION: 08/20/19
WEATHER CONDITIONS: 77° CLEAR (NIGHT)

TEST HOLE #: 7
UTILITY TO BE LOCATED: WATER LINE (FOUND)

CONTROL POINT: CP100003 (GROUND)
NORTHING: 712059.3510
EASTING: 1829588.6000
ELEVATION: 751.90

SIZE OF UTILITY: 24"
MATERIAL OF FOUND UTILITY: STEEL
THE UTILITY WAS IN GOOD CONDITION
THERE WERE NOT ADDITIONAL UTILITIES IN THE TEST HOLE
SURVEYED ELEVATION TOP OF UTILITY: 745.99
SURVEYED ELEVATION BOTTOM OF UTIL (IF REQ.): N/A
SURVEYED NORTHING TOP OF UTILITY: 712019.9950 (GROUND)
SURVEYED EASTING TOP OF UTILITY: 1829763.7580 (GROUND)
DEPTH OF TOP OF UTILITY FROM SURFACE: 5.2' DEPTH
DIRECTION OF UTILITY LINE: NORTH TO SOUTH
PHOTO IMAGE NUMBERS: 686-687

TEST HOLE LOCATION (PAV., BERM, ETC): GRASS SHOULDER
EXISTING SURFACE GRADE ELEVATION: 751.20
PAVING CONDITION PRIOR TO WORK: N/A
PAVING THICKNESS AND TYPE: N/A
SOIL TYPE: ROCK & DIRT FIELD CONDITIONS: DRY
COLOR OF RIBBON INSTALLED IN TEST HOLE: N/A

FIELD REMARKS: N/A

UTILITY REMARKS: N/A



UTILITY LEGEND

GAS — G —
WATER — W —
TELEPHONE — T —
ELECTRIC — E —
SANITARY SEWER — SAN —
STORM SEWER — S —
FIBER OPTIC — FO —
CABLE TV — CTV —
TRAFFIC — TR —

TEST HOLE
FIRE HYDRANT
WATER VALVE
GAS MARKER
GAS VALVE
F.O. MARKER
UNKNOWN P.B.

ELEC. P.B.
POWER POLE
POWER/LIGHT
LIGHT POLE
SAN M.H.
TRAFFIC P.B.
GROUND SHOT

I, Charles W. Price, JR. do hereby certify that the positioning of the utility facilities provided utilizing the Quality Levels was performed in accordance with ODOT's S&LS specifications.

Charles W. Price, JR., P.S.

DATE

9/18/2019

CHARLES W.
PRICE, JR.
S-7825

REGISTERED
PROFESSIONAL SURVEYOR



National Engineering &
Architectural Services, INC. (NEAS)
2800 Corporate Exchange Dr.
Suite 240
Columbus, Ohio 43231
Office: (614) 714-0299
Fax: (614) 714-0251

LEVEL A TEST HOLE CERTIFICATION FORM

PROJECT NAME: FRA-70-14.05 PROJECT 4B, PID#: 96053
NEAS PROJECT #: 18-0085
PROJECT LOCATION (CTY., CITY, ST.): FRA., COLUMBUS, S. 4TH ST.
FOREMAN/TRUCK: N. MILLER, C. OTTEN, N.L., B.J.
DATE OF EXCAVATION: 09/03/19
WEATHER CONDITIONS: 70° CLEAR (NIGHT)

TEST HOLE #: 8
UTILITY TO BE LOCATED: COMBINED SEWER LINE (FOUND)

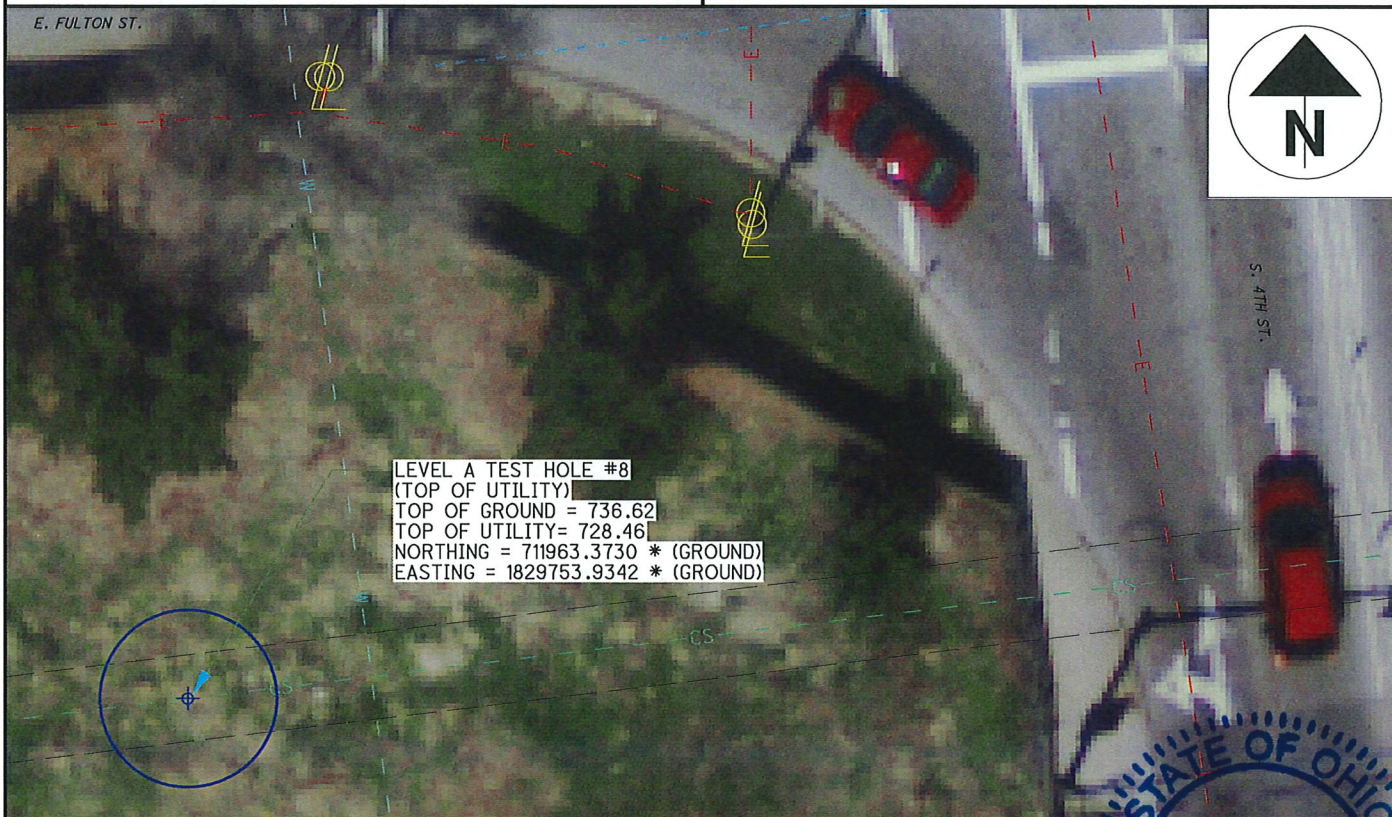
CONTROL POINT: CP8 (GROUND)
NORTHING: 711863.6200
EASTING: 1829079.268
ELEVATION: 743.37

SIZE OF UTILITY: 96"
MATERIAL OF FOUND UTILITY: CONCRETE
THE UTILITY WAS IN GOOD CONDITION
THERE WERE NOT ADDITIONAL UTILITIES IN THE TEST HOLE
SURVEYED ELEVATION TOP OF UTILITY: 728.46
SURVEYED ELEVATION BOTTOM OF UTIL (IF REQ.): N/A
SURVEYED NORTHING TOP OF UTILITY: 711963.3730 * (GROUND)
SURVEYED EASTING TOP OF UTILITY: 1829753.9342 * (GROUND)
DEPTH OF TOP OF UTILITY FROM SURFACE: 8.2' DEPTH
DIRECTION OF UTILITY LINE: EAST TO WEST
PHOTO IMAGE NUMBERS: 924-925

TEST HOLE LOCATION (PAV., BERM, ETC): GRASS SHOULDER
EXISTING SURFACE GRADE ELEVATION: 736.62
PAVING CONDITION PRIOR TO WORK: N/A
PAVING THICKNESS AND TYPE: N/A
SOIL TYPE: ROCK & DIRT FIELD CONDITIONS: DRY
COLOR OF RIBBON INSTALLED IN TEST HOLE: N/A

FIELD REMARKS: HORIZONTAL LOCATION BASED ON INTERPOLATION OF MULTIPLE SURVEY SHOTS ON THE PIPE,

UTILITY REMARKS: N/A



UTILITY LEGEND

GAS	— G —	TEST HOLE	⊗ ELEC. P.B.
WATER	— W —	FIRE HYDRANT	⊗ POWER POLE
TELEPHONE	— T —	WATER VALVE	⊗ POWER/LIGHT
ELECTRIC	— E —	⊕ GAS MARKER	⊕ LIGHT POLE
SANITARY SEWER	— SAN —	⊕ GAS VALVE	⊕ SAN M.H.
STORM SEWER	— SS —	⊕ F.O. MARKER	⊕ TRAFFIC P.B.
FIBER OPTIC	— FO —	⊕ UNKNOWN P.B.	⊕ GROUND SHOT
CABLE TV	— CTV —		
TRAFFIC	— TR —		

I, Charles W. Price, JR. do hereby certify that the positioning of the utility facilities provided utilizing the Quality Levels was performed in accordance with ODOT's S-7825 specifications.

Charles W. Price, JR., P.S.

DATE 9/18/2019

CHARLES W.
PRICE, JR.
S-7825

REGISTERED
PROFESSIONAL SURVEYOR



National Engineering &
Architectural Services, INC. (NEAS)
2800 Corporate Exchange Dr.
Suite 240
Columbus, Ohio 43231
Office: (614) 714-0299
Fax: (614) 714-0251

LEVEL A TEST HOLE CERTIFICATION FORM

PROJECT NAME: FRA-70-14.05 PROJECT 4B, PID#: 96053
NEAS PROJECT #: 18-0085
PROJECT LOCATION (CTY., CITY, ST.): FRA., COL., S. 3RD ST TO I-70 EB
FOREMAN/TRUCK: N. MILLER, A. CROOKS, J.H., N.L., B.J.
DATE OF EXCAVATION: 08/28/19
WEATHER CONDITIONS: 65° CLEAR (NIGHT)

TEST HOLE #: 9
UTILITY TO BE LOCATED: WATER LINE (NOT FOUND)

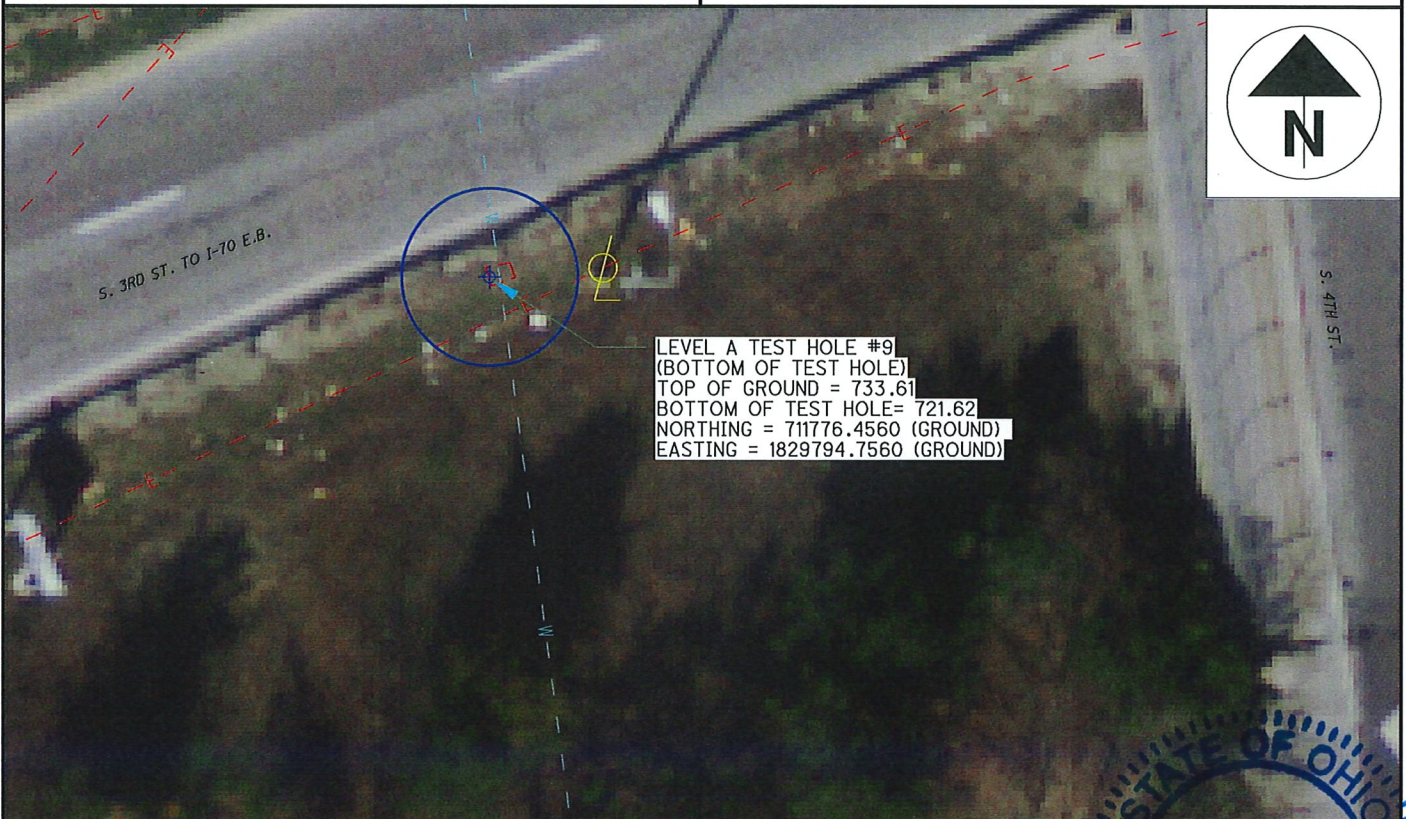
CONTROL POINT: 200093 (GROUND)
NORTHING: 711767.5490
EASTING: 1829767.8550
ELEVATION: 734.35

SIZE OF UTILITY: N/A
MATERIAL OF FOUND UTILITY: N/A
THE UTILITY N/A IN GOOD CONDITION
THERE WERE NOT ADDITIONAL UTILITIES IN THE TEST HOLE
SURVEYED ELEVATION BOTTOM OF TEST HOLE: 721.62
SURVEYED ELEVATION BOTTOM OF UTIL (IF REQ.): N/A
SURVEYED NORTHING BOTTOM OF HOLE: 711776.4560 (GROUND)
SURVEYED EASTING BOTTOM OF HOLE: 1829794.7560 (GROUND)
DEPTH OF BOTTOM OF HOLE FROM SURFACE: 12.0' DEPTH
DIRECTION OF UTILITY LINE: N/A
PHOTO IMAGE NUMBERS: 703-705

TEST HOLE LOCATION (PAV., BERM, ETC): GRASS SHOULDER
EXISTING SURFACE GRADE ELEVATION: 733.61
PAVING CONDITION PRIOR TO WORK: N/A
PAVING THICKNESS AND TYPE: N/A
SOIL TYPE: CLAY, ROCK & SAND FIELD CONDITIONS: DRY
COLOR OF RIBBON INSTALLED IN TEST HOLE: N/A

FIELD REMARKS: PROBED TO EAST AND WEST, NO SIGN OF UTILITY

UTILITY REMARKS: WATER LINE MARKED BY CITY



LEVEL A TEST HOLE #9
(BOTTOM OF TEST HOLE)
TOP OF GROUND = 733.61
BOTTOM OF TEST HOLE = 721.62
NORTHING = 711776.4560 (GROUND)
EASTING = 1829794.7560 (GROUND)

UTILITY LEGEND

GAS	— G —	TEST HOLE	⊕ ELEC. P.B.
WATER	— W —	FIRE HYDRANT	⊕ POWER POLE
TELEPHONE	— T —	WATER VALVE	⊕ POWER/LIGHT
ELECTRIC	— E —	⊕ GAS MARKER	⊕ LIGHT POLE
SANITARY SEWER	— SAN —	⊕ GAS VALVE	⊕ SAN M.H.
STORM SEWER	— S —	⊕ F.O. MARKER	⊕ TRAFFIC P.B.
FIBER OPTIC	— FO —	⊕ UNKNOWN P.B.	⊕ GROUND SHOT
CABLE TV	— CTV —		
TRAFFIC	— TR —		

I, Charles W. Price, JR. do hereby certify that
the positioning of the utility facilities
provided utilizing the Quality Levels was
performed in accordance with ODOT's SUTS
specifications.

Charles W. Price, JR., P.S.

DATE 9/18/2019

CHARLES W.
PRICE, JR.
S-7825

REGISTERED
PROFESSIONAL SURVEYOR



National Engineering &
Architectural Services, INC. (NEAS)
2800 Corporate Exchange Dr.
Suite 240
Columbus, Ohio 43231
Office: (614) 714-0299
Fax: (614) 714-0251

LEVEL A TEST HOLE CERTIFICATION FORM

PROJECT NAME: FRA-70-14.05 PROJECT 4B, PID#: 96053
NEAS PROJECT #: 18-0085
PROJECT LOCATION (CTY., CITY, ST.): FRA., COLUMBUS, S. 4TH ST.
FOREMAN/TRUCK: N. MILLER, A. CROOKS, J.H., N.L., B.J.
DATE OF EXCAVATION: 08/20/19
WEATHER CONDITIONS: 78° CLOUDY

TEST HOLE #: 10
UTILITY TO BE LOCATED: TELEPHONE D.B. (FOUND)

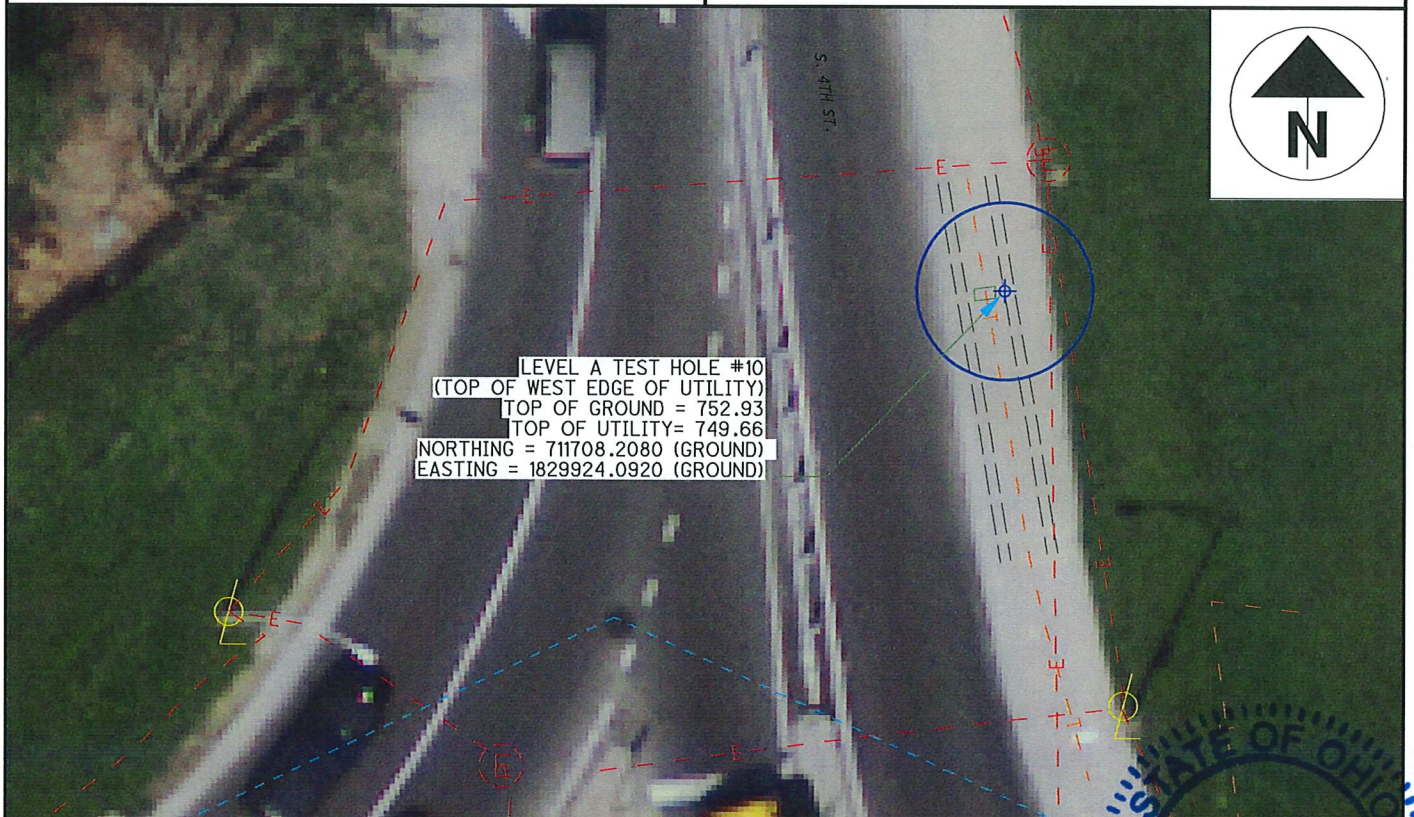
CONTROL POINT: CP74 (GROUND)
NORTHING: 711657.5460
EASTING: 1829935.8200
ELEVATION: 752.72

SIZE OF UTILITY: 12" X 12"
MATERIAL OF FOUND UTILITY: CLAY
THE UTILITY WAS IN GOOD CONDITION
THERE WERE NOT ADDITIONAL UTILITIES IN THE TEST HOLE
SURVEYED ELEVATION TOP OF W. EDGE UTILITY: 749.66
SURVEYED ELEVATION BOTTOM OF UTIL (IF REQ.): N/A
SURVEYED NORTHING TOP OF W. EDGE UTILITY: 711708.2080 (GROUND)
SURVEYED EASTING TOP OF W. EDGE UTILITY: 1829924.0920 (GROUND)
DEPTH OF TOP OF UTILITY FROM SURFACE: 3.3' DEPTH
DIRECTION OF UTILITY LINE: NORTH TO SOUTH
PHOTO IMAGE NUMBERS: 684-685

TEST HOLE LOCATION (PAV., BERM, ETC): CONCRETE SIDEWALK
EXISTING SURFACE GRADE ELEVATION: 752.93
PAVING CONDITION PRIOR TO WORK: GOOD
PAVING THICKNESS AND TYPE: 0.35 CONCRETE
SOIL TYPE: DIRT & SAND FIELD CONDITIONS: DRY
COLOR OF RIBBON INSTALLED IN TEST HOLE: N/A

FIELD REMARKS: N/A

UTILITY REMARKS: AT&T PLAN SHOWS (2) 12" X 12" D.B. RUNNING
PARALLEL. FOUND WEST EDGE OF EASTERN D.B.



UTILITY LEGEND

GAS	— G —	TEST HOLE	⊕ ELEC. P.B.
WATER	— W —	FIRE HYDRANT	⊕ POWER POLE
TELEPHONE	— T —	WATER VALVE	⊕ POWER/LIGHT
ELECTRIC	— E —	⊕ GAS MARKER	⊕ LIGHT POLE
SANITARY SEWER	— SAN —	⊕ GAS VALVE	⊕ SAN M.H.
STORM SEWER	— SS —	⊕ F.O. MARKER	⊕ TRAFFIC P.B.
FIBER OPTIC	— FO —	⊕ UNKNOWN P.B.	⊕ GROUND SHOT
CABLE TV	— CTV —		
TRAFFIC	— TR —		

I, Charles W. Price, JR. do hereby certify that the positioning of the utility facilities provided utilizing the Quality Levels was performed in accordance with ODOT's SURS specifications.

Charles W. Price, JR., P.S.

DATE 9/18/2019

CHARLES W.
PRICE, JR.
S-7825

REGISTERED

PROFESSIONAL SURVEYOR



National Engineering &
Architectural Services, INC. (NEAS)
2800 Corporate Exchange Dr.
Suite 240
Columbus, Ohio 43231
Office: (614) 714-0299
Fax: (614) 714-0251

LEVEL A TEST HOLE CERTIFICATION FORM

PROJECT NAME: FRA-70-14.05 PROJECT 4B, PID#: 96053
NEAS PROJECT #: 18-0085
PROJECT LOCATION (CTY., CITY, ST.): FRA., COLUMBUS, S. 3RD ST.
FOREMAN/TRUCK: N. MILLER, A. CROOKS, J.H., N.L., B.J.
DATE OF EXCAVATION: 08/21/19
WEATHER CONDITIONS: 80° (NIGHT)

TEST HOLE #: 11
UTILITY TO BE LOCATED: WATER LINE (FOUND)

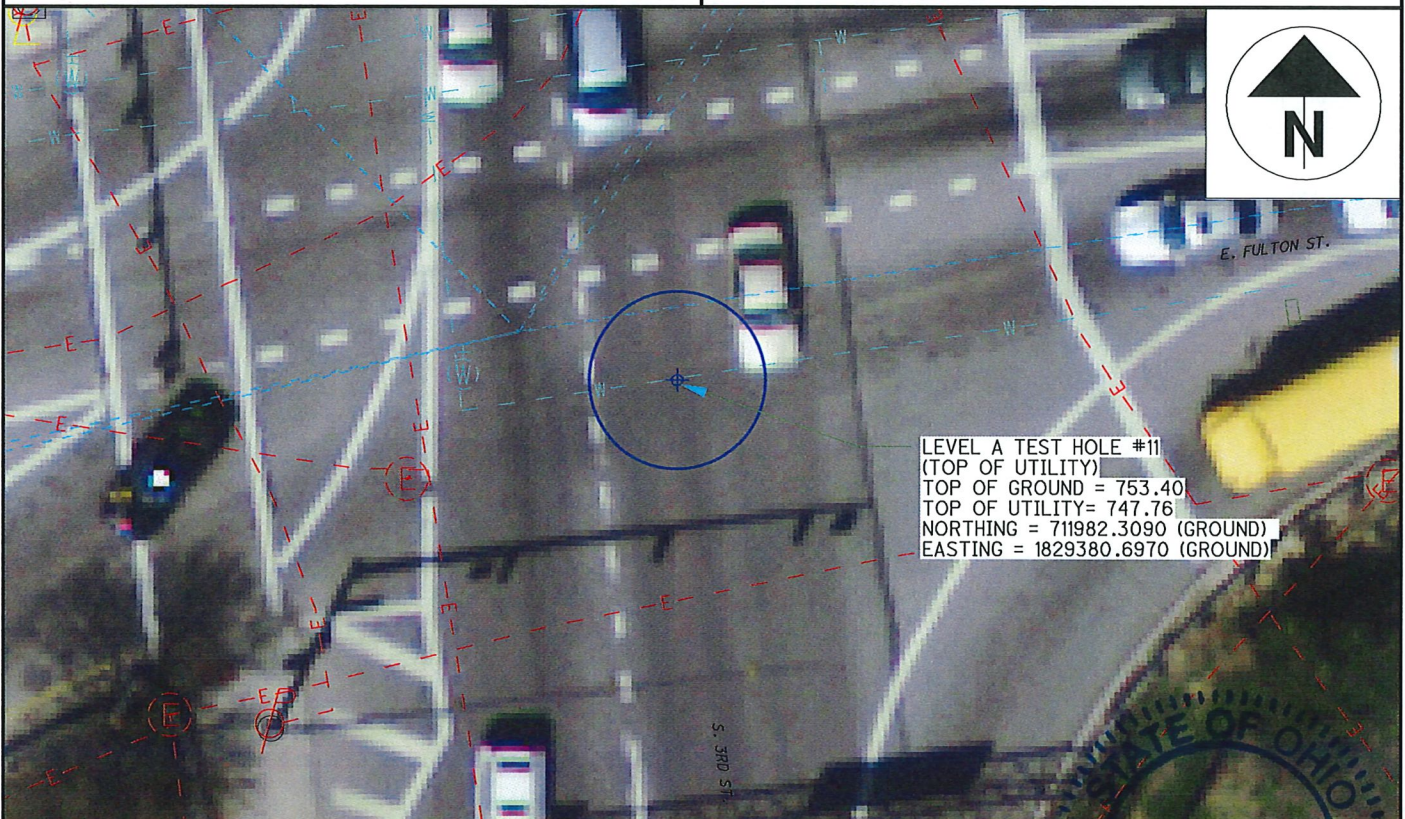
CONTROL POINT: CP100005 (GROUND)
NORTHING: 712030.9480
EASTING: 1829320.0700
ELEVATION: 753.89

SIZE OF UTILITY: 16"
MATERIAL OF FOUND UTILITY: STEEL
THE UTILITY WAS IN GOOD CONDITION
THERE WERE NOT ADDITIONAL UTILITIES IN THE TEST HOLE
SURVEYED ELEVATION TOP OF UTILITY: 747.76
SURVEYED ELEVATION BOTTOM OF UTIL (IF REQ.): N/A
SURVEYED NORTHING TOP OF UTILITY: 711982.3090 (GROUND)
SURVEYED EASTING TOP OF UTILITY: 1829380.6970 (GROUND)
DEPTH OF TOP OF UTILITY FROM SURFACE: 5.6' DEPTH
DIRECTION OF UTILITY LINE: EAST TO WEST
PHOTO IMAGE NUMBERS: 693-694

TEST HOLE LOCATION (PAV., BERM, ETC): PAVED STREET
EXISTING SURFACE GRADE ELEVATION: 753.40
PAVING CONDITION PRIOR TO WORK: GOOD
PAVING THICKNESS AND TYPE: 0.35' BLACKTOP, 0.8' CONC.
SOIL TYPE: ROCK & CLAY FIELD CONDITIONS: DRY
COLOR OF RIBBON INSTALLED IN TEST HOLE: N/A

FIELD REMARKS: N/A

UTILITY REMARKS: WATER LINE MARKED BY CITY



UTILITY LEGEND

GAS	— G —	TEST HOLE	— ELEC. P.B. —
WATER	— W —	FIRE HYDRANT	— POWER POLE —
TELEPHONE	— T —	WATER VALVE	— POWER/LIGHT —
ELECTRIC	— E —	+G GAS MARKER	— LIGHT POLE —
SANITARY SEWER	— SAN —	+G GAS VALVE	— SAN M.H. —
STORM SEWER	— SS —	F.O. MARKER	— TRAFFIC P.B. —
FIBER OPTIC	— FO —	UNKNOWN P.B.	— GROUND SHOT —
CABLE TV	— CTV —		
TRAFFIC	— TR —		

I, Charles W. Price, JR. do hereby certify that
the positioning of the utility facilities
provided utilizing the Quality Levels was
performed in accordance with ODOT's S&S
specifications.

Charles W. Price, JR., P.S.

DATE 9/18/2019

CHARLES W.
PRICE, JR.
S-7825

REGISTERED
PROFESSIONAL SURVEYOR



National Engineering &
Architectural Services, INC. (NEAS)
2800 Corporate Exchange Dr.
Suite 240
Columbus, Ohio 43231
Office: (614) 714-0299
Fax: (614) 714-0251

LEVEL A TEST HOLE CERTIFICATION FORM

PROJECT NAME: FRA-70-14.05 PROJECT 4B, PID#: 96053
NEAS PROJECT #: 18-Q085
PROJECT LOCATION (CTY., CITY, ST.): FRA., COL., S. 3RD ST TO I-70 EB
FOREMAN/TRUCK: N. MILLER, C. OTTEN, N.L., B.J.
DATE OF EXCAVATION: 09/04/19
WEATHER CONDITIONS: 70° CLEAR (NIGHT)

TEST HOLE #: 12
UTILITY TO BE LOCATED: WATER LINE (NOT FOUND)

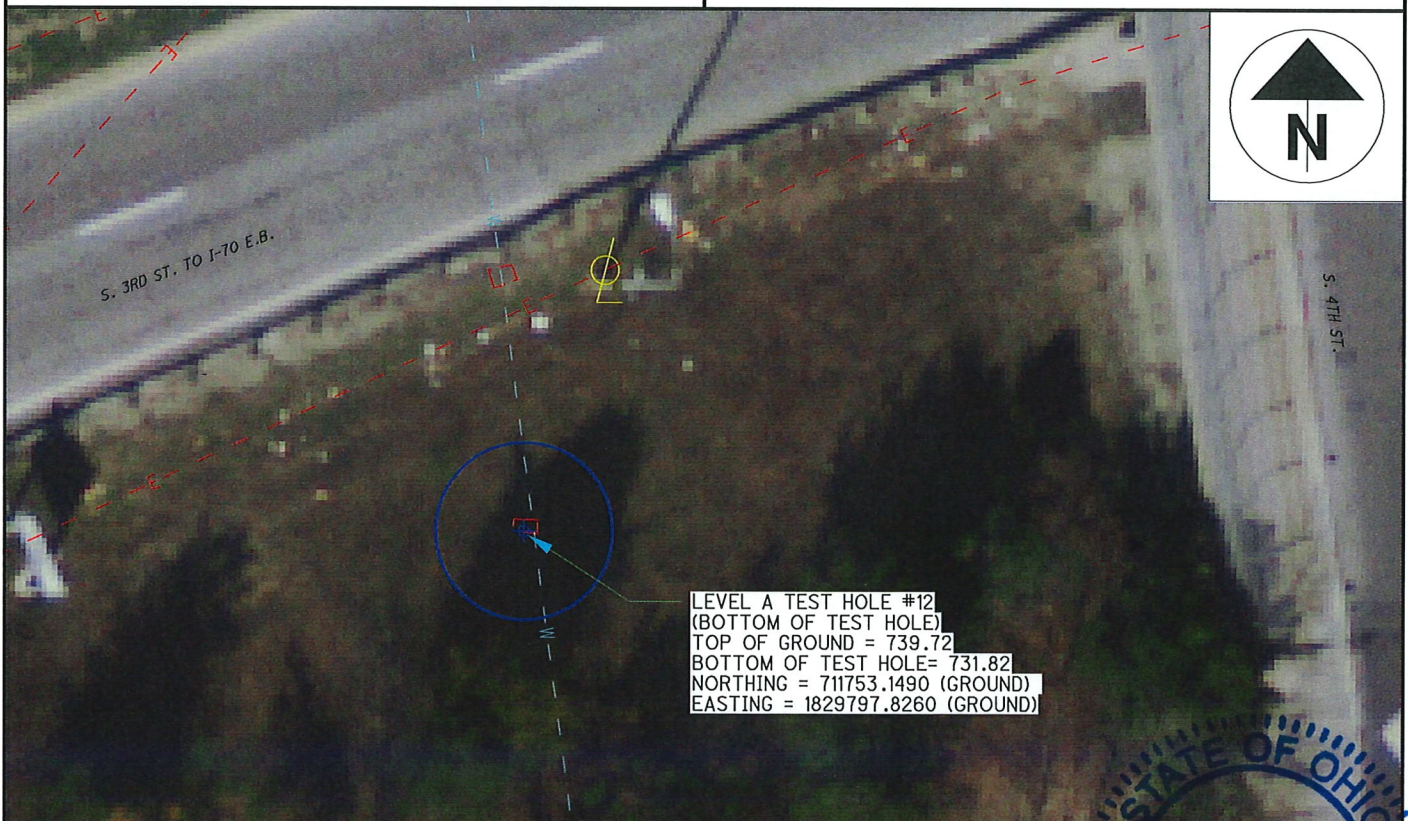
CONTROL POINT: 200093 (GROUND)
NORTHING: 711767.5490
EASTING: 1829767.8550
ELEVATION: 734.35

SIZE OF UTILITY: N/A
MATERIAL OF FOUND UTILITY: N/A
THE UTILITY N/A IN GOOD CONDITION
THERE WERE NOT ADDITIONAL UTILITIES IN THE TEST HOLE
SURVEYED ELEVATION BOTTOM OF TEST HOLE: 731.82
SURVEYED ELEVATION BOTTOM OF UTIL (IF REQ.): N/A
SURVEYED NORTHING BOTTOM OF HOLE: 711753.1490 (GROUND)
SURVEYED EASTING BOTTOM OF HOLE: 1829797.8260 (GROUND)
DEPTH OF BOTTOM OF HOLE FROM SURFACE: 7.9' DEPTH
DIRECTION OF UTILITY LINE: N/A
PHOTO IMAGE NUMBERS: 935-936

TEST HOLE LOCATION (PAV., BERM, ETC): GRASS SHOULDER
EXISTING SURFACE GRADE ELEVATION: 739.72
PAVING CONDITION PRIOR TO WORK: N/A
PAVING THICKNESS AND TYPE: N/A
SOIL TYPE: CLAY & ROCK FIELD CONDITIONS: DRY
COLOR OF RIBBON INSTALLED IN TEST HOLE: N/A

FIELD REMARKS: DUG TO 7.9' AND RAN INTO ROCK, COULD NOT PROBE ANY DEEPER, NO SIGN OF UTILITY

UTILITY REMARKS: WATER LINE MARKED BY CITY



LEVEL A TEST HOLE #12
(BOTTOM OF TEST HOLE)
TOP OF GROUND = 739.72
BOTTOM OF TEST HOLE = 731.82
NORTHING = 711753.1490 (GROUND)
EASTING = 1829797.8260 (GROUND)

UTILITY LEGEND

GAS	— G —	TEST HOLE	— ELEC. P.B. —
WATER	— W —	FIRE HYDRANT	— POWER POLE —
TELEPHONE	— T —	WATER VALVE	— POWER/LIGHT —
ELECTRIC	— E —	— G —	— LIGHT POLE —
SANITARY SEWER	— SAN —	GAS MARKER	— SAN M.H. —
STORM SEWER	— FO —	GAS VALVE	— TRAFFIC P.B. —
FIBER OPTIC	— FO —	F.O. MARKER	— GROUND SHOT —
CABLE TV	— CTV —	UNKNOWN P.B.	
TRAFFIC	— TR —		

I, Charles W. Price, JR. do hereby certify that the positioning of the utility facilities provided utilizing the Quality Levels was performed in accordance with ODOT's SLS specifications.

Charles W. Price, JR., P.S.

DATE 9/18/2019

CHARLES W.
PRICE, JR.
S-7825

REGISTERED
PROFESSIONAL SURVEYOR



National Engineering &
Architectural Services, INC. (NEAS)
2800 Corporate Exchange Dr.
Suite 240
Columbus, Ohio 43231
Office: (614) 714-0299
Fax: (614) 714-0251

LEVEL A TEST HOLE CERTIFICATION FORM

PROJECT NAME: FRA-70-14.05 PROJECT 4B, PID#: 96053
NEAS PROJECT #: 18-0085
PROJECT LOCATION (CTY., CITY, ST.): FRA., COL., S. 3RD ST TO I70 EB
FOREMAN/TRUCK: N. MILLER, A. CROOKS, J.H., N.L., B.J.
DATE OF EXCAVATION: 08/14/19
WEATHER CONDITIONS: 86° SUNNY

TEST HOLE #: 13
UTILITY TO BE LOCATED: WATER LINE (FOUND)

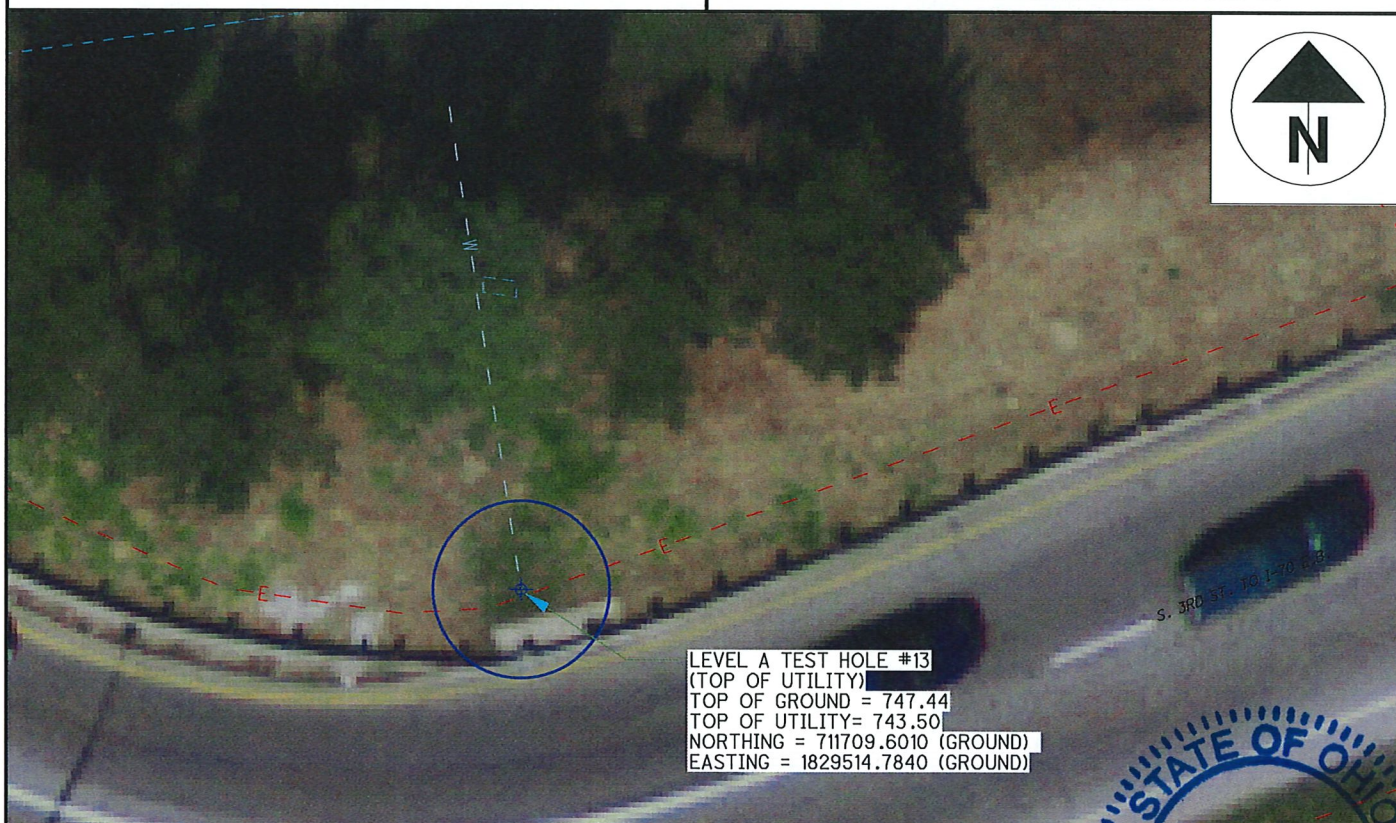
CONTROL POINT: CP17 (GROUND)
NORTHING: 711681.8760
EASTING: 1829372.9600
ELEVATION: 750.67

SIZE OF UTILITY: 16"
MATERIAL OF FOUND UTILITY: STEEL
THE UTILITY WAS IN GOOD CONDITION
THERE WERE NOT ADDITIONAL UTILITIES IN THE TEST HOLE
SURVEYED ELEVATION TOP OF UTILITY: 743.50
SURVEYED ELEVATION BOTTOM OF UTIL (IF REQ.): N/A
SURVEYED NORTHING TOP OF UTILITY: 711709.6010 (GROUND)
SURVEYED EASTING TOP OF UTILITY: 1829514.7840 (GROUND)
DEPTH OF TOP OF UTILITY FROM SURFACE: 4.0' DEPTH
DIRECTION OF UTILITY LINE: NORTH TO SOUTH
PHOTO IMAGE NUMBERS: 672-673

TEST HOLE LOCATION (PAV., BERM, ETC): GRASS SHOULDER
EXISTING SURFACE GRADE ELEVATION: 747.44
PAVING CONDITION PRIOR TO WORK: N/A
PAVING THICKNESS AND TYPE: N/A
SOIL TYPE: DIRT & SAND FIELD CONDITIONS: DRY
COLOR OF RIBBON INSTALLED IN TEST HOLE: N/A

FIELD REMARKS: N/A

UTILITY REMARKS: N/A



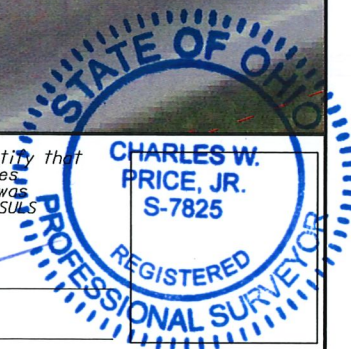
UTILITY LEGEND

GAS	— G —	TEST HOLE	— ELEC. P.B. —
WATER	— W —	FIRE HYDRANT	— POWER POLE —
TELEPHONE	— T —	WATER VALVE	— POWER/LIGHT —
ELECTRIC	— E —	GAS MARKER	— LIGHT POLE —
SANITARY SEWER	— SAN —	GAS VALVE	— SAN M.H. —
STORM SEWER	— SS —	F.O. MARKER	— TRAFFIC P.B. —
FIBER OPTIC	— FO —	UNKNOWN P.B.	— GROUND SHOT —
CABLE TV	— CTV —		
TRAFFIC	— TR —		

I, Charles W. Price, JR. do hereby certify that the positioning of the utility facilities provided utilizing the Quality Levels was performed in accordance with ODOT's SUTS specifications.

Charles W. Price, JR., P.S.

DATE 9/18/2019





National Engineering &
Architectural Services, INC. (NEAS)
2800 Corporate Exchange Dr.
Suite 240
Columbus, Ohio 43231
Office: (614) 714-0299
Fax: (614) 714-0251

LEVEL A TEST HOLE CERTIFICATION FORM

PROJECT NAME: FRA-70-14.05 PROJECT 4B, PID#: 96053
NEAS PROJECT #: 18-0085
PROJECT LOCATION (CTY., CITY, ST.): FRA., COLUMBUS, S. 3RD ST.
FOREMAN/TRUCK: N. MILLER, A. CROOKS, J.H., N.L., B.J.
DATE OF EXCAVATION: 08/27/19
WEATHER CONDITIONS: 70° CLEAR (NIGHT)

TEST HOLE #: 14
UTILITY TO BE LOCATED: ELECTRIC D.B. (FOUND)

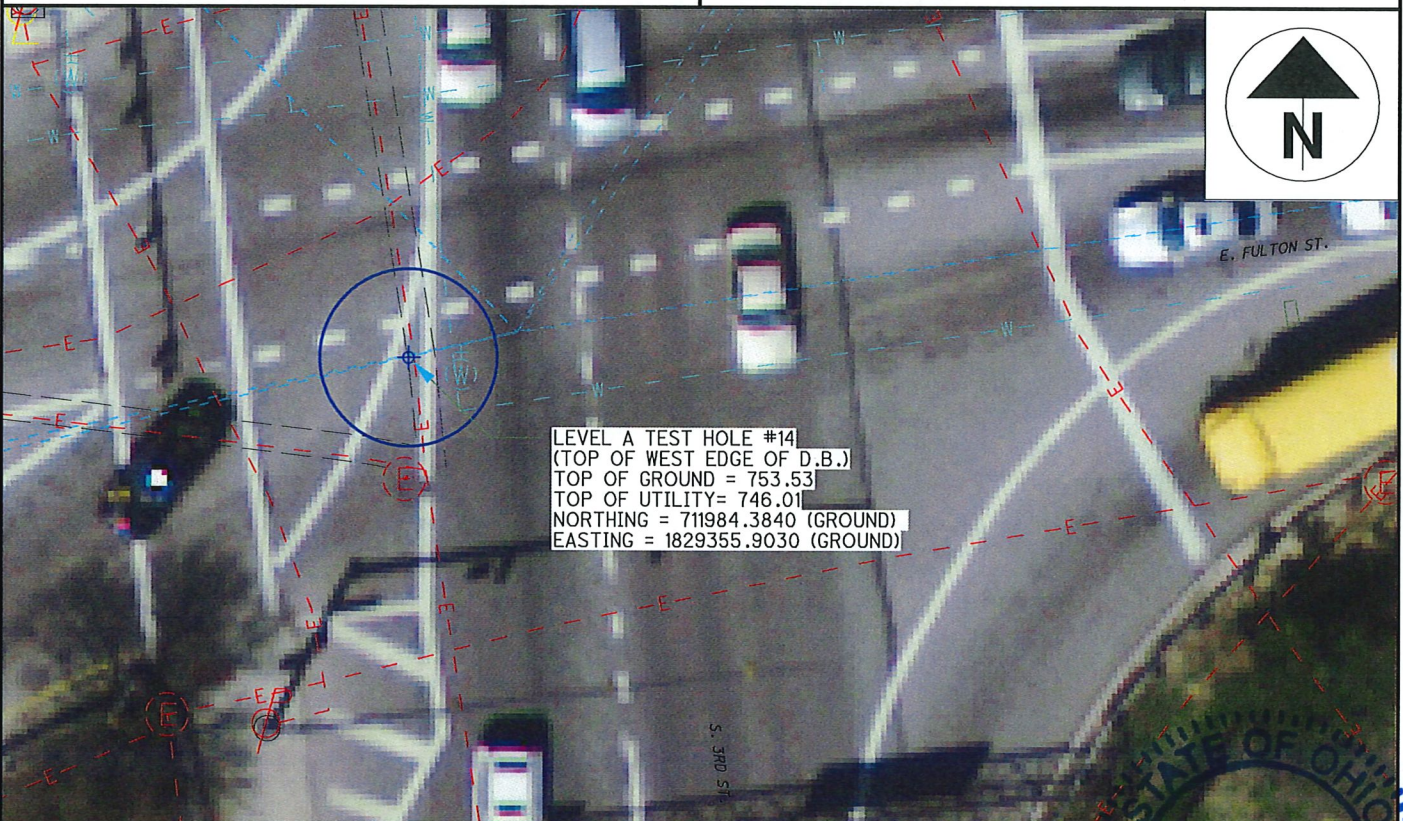
CONTROL POINT: CP100005 (GROUND)
NORTHING: 712030.9480
EASTING: 1829320.0700
ELEVATION: 753.89

SIZE OF UTILITY: UNKNOWN WIDTH
MATERIAL OF FOUND UTILITY: CONCRETE
THE UTILITY WAS IN GOOD CONDITION
THERE WERE NOT ADDITIONAL UTILITIES IN THE TEST HOLE
SURVEYED ELEVATION TOP OF W. EDGE UTILITY: 746.01
SURVEYED ELEVATION BOTTOM OF UTIL (IF REQ.): N/A
SURVEYED NORTHING TOP OF W. EDGE UTILITY: 711984.3840 (GROUND)
SURVEYED EASTING TOP OF W. EDGE UTILITY: 1829355.9030 (GROUND)
DEPTH OF TOP OF UTILITY FROM SURFACE: 7.5' DEPTH
DIRECTION OF UTILITY LINE: NORTH TO SOUTH
PHOTO IMAGE NUMBERS: 174-175

TEST HOLE LOCATION (PAV., BERM, ETC): PAVED STREET
EXISTING SURFACE GRADE ELEVATION: 753.53
PAVING CONDITION PRIOR TO WORK: GOOD
PAVING THICKNESS AND TYPE: 0.3' BLACKTOP, 0.8' CONC.
SOIL TYPE: ROCK & DIRT FIELD CONDITIONS: WET
COLOR OF RIBBON INSTALLED IN TEST HOLE: N/A

FIELD REMARKS: N/A

UTILITY REMARKS: N/A



UTILITY LEGEND

GAS	— G —	TEST HOLE	— ELEC. P.B. —
WATER	— W —	FIRE HYDRANT	— POWER POLE —
TELEPHONE	— T —	WATER VALVE	— POWER/LIGHT —
ELECTRIC	— E —	— G — GAS MARKER	— LIGHT POLE —
SANITARY SEWER	— SAN —	— G — GAS VALVE	— SAN M.H. —
STORM SEWER	— S —	— F.O. — F.O. MARKER	— TRAFFIC P.B. —
FIBER OPTIC	— FO —	— X — GROUND SHOT	
CABLE TV	— CTV —		
TRAFFIC	— TR —		

I, Charles W. Price, JR. do hereby certify that the positioning of the utility facilities provided utilizing the Quality Levels was performed in accordance with ODOT's SLS specifications.

Charles W. Price, JR., P.S.

DATE 9/18/2019

CHARLES W.
PRICE, JR.
S-7825

REGISTERED
PROFESSIONAL SURVEYOR



National Engineering &
Architectural Services, INC. (NEAS)
2800 Corporate Exchange Dr.
Suite 240
Columbus, Ohio 43231
Office: (614) 714-0299
Fax: (614) 714-0251

LEVEL A TEST HOLE CERTIFICATION FORM

PROJECT NAME: FRA-70-14.05 PROJECT 4B, PID#: 96053
NEAS PROJECT #: 18-0085
PROJECT LOCATION (CTY., CITY, ST.): FRA., COLUMBUS, 170 EB
FOREMAN/TRUCK: N. MILLER, A. CROOKS, J.H., N.L., B.J.
DATE OF EXCAVATION: 08/28/19
WEATHER CONDITIONS: 66° CLEAR (NIGHT)

TEST HOLE #: 15
UTILITY TO BE LOCATED: ELECTRIC LINE (FOUND)

CONTROL POINT: 200100 (GROUND)
NORTHING: 711786.2970
EASTING: 1829551.2880
ELEVATION: 729.95

SIZE OF UTILITY: 18"
MATERIAL OF FOUND UTILITY: STEEL
THE UTILITY WAS IN GOOD CONDITION
THERE WERE NOT ADDITIONAL UTILITIES IN THE TEST HOLE
SURVEYED ELEVATION TOP OF UTILITY: 725.49
SURVEYED ELEVATION BOTTOM OF UTIL (IF REQ.): N/A
SURVEYED NORTHING TOP OF UTILITY: 711788.9580 (GROUND)
SURVEYED EASTING TOP OF UTILITY: 1829561.2730 (GROUND)
DEPTH OF TOP OF UTILITY FROM SURFACE: 5.0' DEPTH
DIRECTION OF UTILITY LINE: NORTHWEST TO SOUTHEAST
PHOTO IMAGE NUMBERS: 698-699

TEST HOLE LOCATION (PAV., BERM, ETC): GRASS SHOULDER
EXISTING SURFACE GRADE ELEVATION: 730.48
PAVING CONDITION PRIOR TO WORK: N/A
PAVING THICKNESS AND TYPE: N/A
SOIL TYPE: DIRT & SAND FIELD CONDITIONS: DRY
COLOR OF RIBBON INSTALLED IN TEST HOLE: N/A

FIELD REMARKS: N/A

UTILITY REMARKS: N/A



LEVEL A TEST HOLE #15
(TOP OF UTILITY)
TOP OF GROUND = 730.48
TOP OF UTILITY = 725.49
NORTHING = 711788.9580 (GROUND)
EASTING = 1829561.2730 (GROUND)

UTILITY LEGEND

GAS	— G —	TEST HOLE	⊕ ELEC. P.B.
WATER	— W —	FIRE HYDRANT	⊕ POWER POLE
TELEPHONE	— T —	WATER VALVE	⊕ POWER/LIGHT
ELECTRIC	— E —	GAS MARKER	⊕ LIGHT POLE
SANITARY SEWER	— SAN —	GAS VALVE	⊕ SAN M.H.
STORM SEWER	— FO —	F.O. MARKER	⊕ TRAFFIC P.B.
FIBER OPTIC	— CT —	UNKNOWN P.B.	⊕ GROUND SHOT
CABLE TV	— TR —		
TRAFFIC			

I, Charles W. Price, JR. do hereby certify that
the positioning of the utility facilities
provided utilizing the Quality Levels was
performed in accordance with ODOT's SUTS
specifications.

Charles W. Price, JR., P.S.

DATE 9/18/2019

CHARLES W.
PRICE, JR.
S-7825

REGISTERED
PROFESSIONAL SURVEYOR



National Engineering &
Architectural Services, INC. (NEAS)
2800 Corporate Exchange Dr.
Suite 240
Columbus, Ohio 43231
Office: (614) 714-0299
Fax: (614) 714-0251

LEVEL A TEST HOLE CERTIFICATION FORM

PROJECT NAME: ERA-70-14.05 PROJECT 4B, PID#: 96053
NEAS PROJECT #: 18-0085
PROJECT LOCATION (CTY., CITY, ST.): ERA, COLUMBUS, 170 EB
FOREMAN/TRUCK: N, MILLER, A, CROOKS, J.H., N.L., B.J.
DATE OF EXCAVATION: 08/28/19
WEATHER CONDITIONS: 66° CLEAR (NIGHT)

TEST HOLE #: 16
UTILITY TO BE LOCATED: ELECTRIC LINE (FOUND)

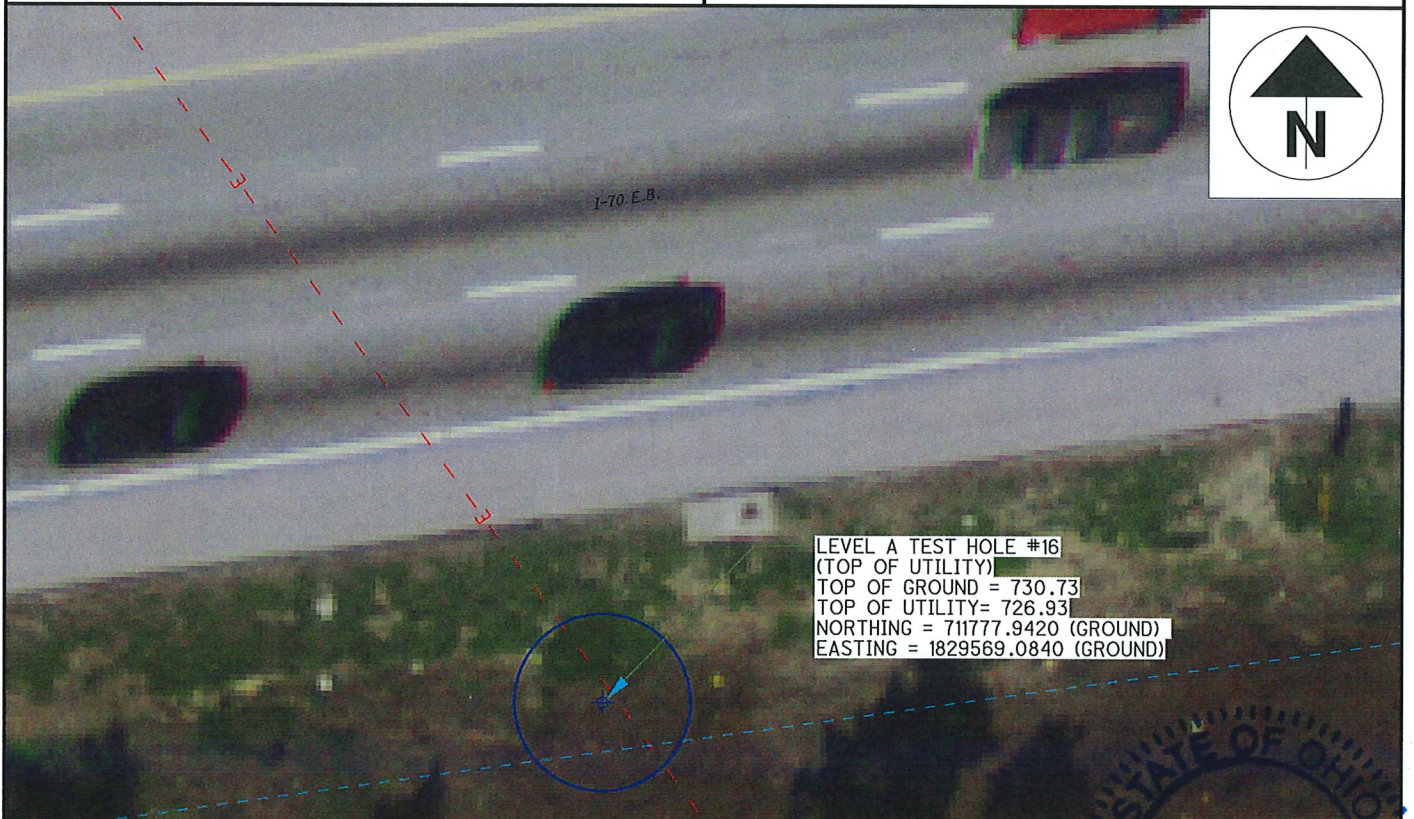
CONTROL POINT: 200100 (GROUND)
NORTHING: 711786.2970
EASTING: 1829551.2880
ELEVATION: 729.95

SIZE OF UTILITY: 18"
MATERIAL OF FOUND UTILITY: STEEL
THE UTILITY WAS IN GOOD CONDITION
THERE WERE NOT ADDITIONAL UTILITIES IN THE TEST HOLE
SURVEYED ELEVATION TOP OF UTILITY: 726.93
SURVEYED ELEVATION BOTTOM OF UTIL (IF REQ.): N/A
SURVEYED NORTHING TOP OF UTILITY: 711777.9420 (GROUND)
SURVEYED EASTING TOP OF UTILITY: 1829569.0840 (GROUND)
DEPTH OF TOP OF UTILITY FROM SURFACE: 3.8' DEPTH
DIRECTION OF UTILITY LINE: NORTHWEST TO SOUTHEAST
PHOTO IMAGE NUMBERS: 700-702

TEST HOLE LOCATION (PAV., BERM, ETC): GRASS SHOULDER
EXISTING SURFACE GRADE ELEVATION: 730.73
PAVING CONDITION PRIOR TO WORK: N/A
PAVING THICKNESS AND TYPE: N/A
SOIL TYPE: DIRT & SAND FIELD CONDITIONS: DRY
COLOR OF RIBBON INSTALLED IN TEST HOLE: N/A

FIELD REMARKS: N/A

UTILITY REMARKS: N/A



LEVEL A TEST HOLE #16
(TOP OF UTILITY)
TOP OF GROUND = 730.73
TOP OF UTILITY = 726.93
NORTHING = 711777.9420 (GROUND)
EASTING = 1829569.0840 (GROUND)

UTILITY LEGEND

GAS	— G —	TEST HOLE	⊕ ELEC. P.B.
WATER	— W —	FIRE HYDRANT	⊕ POWER POLE
TELEPHONE	— T —	WATER VALVE	⊕ POWER/LIGHT
ELECTRIC	— E —	⊕ GAS MARKER	⊕ LIGHT POLE
SANITARY SEWER	— SAN —	⊕ GAS VALVE	⊕ SAN M.H.
STORM SEWER	— S —	⊕ F.O. MARKER	⊕ TRAFFIC P.B.
FIBER OPTIC	— FO —	⊕ UNKNOWN P.B.	⊕ GROUND SHOT
CABLE TV	— CTV —		
TRAFFIC	— TR —		

I, Charles W. Price, JR. do hereby certify that
the positioning of the utility facilities
provided utilizing the Quality Levels was
performed in accordance with ODOT's SULS
specifications.

Charles W. Price, JR., P.S.

DATE 9/18/2019

CHARLES W.
PRICE, JR.
S-7825

REGISTERED
PROFESSIONAL SURVEYOR



National Engineering &
Architectural Services, INC. (NEAS)
2800 Corporate Exchange Dr.
Suite 240
Columbus, Ohio 43231
Office: (614) 714-0299
Fax: (614) 714-0251

LEVEL A TEST HOLE CERTIFICATION FORM

PROJECT NAME: FRA-70-14.05 PROJECT 4B, PID#: 96053
NEAS PROJECT #: 18-0085
PROJECT LOCATION (CTY., CITY, ST.): FRA., COLUMBUS, S. 3RD ST.
FOREMAN/TRUCK: N. MILLER, A. CROOKS, J.H., N.L., B.J.
DATE OF EXCAVATION: 08/19/19
WEATHER CONDITIONS: 79° CLOUDY (NIGHT)

TEST HOLE #: 17
UTILITY TO BE LOCATED: WATER LINE (FOUND)

CONTROL POINT: CP100004 (GROUND)
NORTHING: 712032.2480
EASTING: 1829404.7190
ELEVATION: 753.42

SIZE OF UTILITY: 24"
MATERIAL OF FOUND UTILITY: STEEL
THE UTILITY WAS IN GOOD CONDITION
THERE WERE NOT ADDITIONAL UTILITIES IN THE TEST HOLE
SURVEYED ELEVATION TOP OF UTILITY: 747.48
SURVEYED ELEVATION BOTTOM OF UTIL (IF REQ.): N/A
SURVEYED NORTHING TOP OF UTILITY: 712012.532 (GROUND)
SURVEYED EASTING TOP OF UTILITY: 1829384.8200 (GROUND)
DEPTH OF TOP OF UTILITY FROM SURFACE: 6.0' DEPTH
DIRECTION OF UTILITY LINE: EAST TO WEST
PHOTO IMAGE NUMBERS: 682-683

TEST HOLE LOCATION (PAV., BERM, ETC): PAVED STREET
EXISTING SURFACE GRADE ELEVATION: 753.52
PAVING CONDITION PRIOR TO WORK: GOOD
PAVING THICKNESS AND TYPE: 0.35' BLACKTOP, 0.65' CONCRETE
SOIL TYPE: ROCK & DIRT FIELD CONDITIONS: DRY
COLOR OF RIBBON INSTALLED IN TEST HOLE: N/A

FIELD REMARKS: N/A

UTILITY REMARKS: N/A



LEVEL A TEST HOLE #17
(TOP OF UTILITY)
TOP OF GROUND = 753.52
TOP OF UTILITY = 747.48
NORTHING = 712012.532 (GROUND)
EASTING = 1829384.8200 (GROUND)

UTILITY LEGEND

GAS	— G —	TEST HOLE	— ELEC. P.B. —
WATER	— W —	FIRE HYDRANT	— POWER POLE —
TELEPHONE	— T —	WATER VALVE	— POWER/LIGHT —
ELECTRIC	— E —	GAS MARKER	— LIGHT POLE —
SANITARY SEWER	— SAN —	GAS VALVE	— SAN M.H. —
STORM SEWER	— SS —	F.O. MARKER	— TRAFFIC P.B. —
FIBER OPTIC	— FO —	UNKNOWN P.B.	— GROUND SHOT —
CABLE TV	— CTV —		
TRAFFIC	— TR —		

I, Charles W. Price, JR. do hereby certify that the positioning of the utility facilities provided utilizing the Quality Levels was performed in accordance with ODOT's SULS specifications.

Charles W. Price, JR., P.S.

DATE 9/18/2019

CHARLES W.
PRICE, JR.
S-7825

REGISTERED
PROFESSIONAL SURVEYOR



National Engineering &
Architectural Services, INC. (NEAS)
2800 Corporate Exchange Dr.
Suite 240
Columbus, Ohio 43231
Office: (614) 714-0299
Fax: (614) 714-0251

LEVEL A TEST HOLE CERTIFICATION FORM

PROJECT NAME: FRA-70-14.05 PROJECT 4B, PID#: 96053
NEAS PROJECT #: 18-0085
PROJECT LOCATION (CTY., CITY, ST.): FRA., COLUMBUS, S. 3RD ST.
FOREMAN/TRUCK: N. MILLER, A. CROOKS, J.H., N.L., B.J.
DATE OF EXCAVATION: 08/19/19
WEATHER CONDITIONS: 79° CLOUDY (NIGHT)

TEST HOLE #: 18
UTILITY TO BE LOCATED: WATER LINE (FOUND) (A)
UNKNOWN CONCRETE STRUCTURE (FOUND) (B)

CONTROL POINT: CP100004 (GROUND)
NORTHING: 712032.2480
EASTING: 1829404.7190
ELEVATION: 753.42

SIZE OF UTILITY: 4" (A), UNKNOWN (B)
MATERIAL OF FOUND UTILITY: STEEL (A), CONCRETE (B)
THE UTILITY WAS IN GOOD CONDITION
THERE WAS POSSIBLY ADDITIONAL UTILITIES IN THE TEST HOLE
SURVEYED ELEVATION TOP OF UTILITY: 748.94 (A), 749.26 (B)
SURVEYED ELEVATION BOTTOM OF UTIL (IF REQ.): N/A
SURVEYED NORTHING TOP OF UTILITY: *SEE BELOW* (GROUND)
SURVEYED EASTING TOP OF UTILITY: *SEE BELOW* (GROUND)
DEPTH OF TOP OF UTILITY FROM SURFACE: 4.4' DEPTH (A), 4.1' (B)
DIRECTION OF UTILITY LINE: EAST TO WEST (A & B)
PHOTO IMAGE NUMBERS: 677, 679-681

TEST HOLE LOCATION (PAV., BERM, ETC): PAVED STREET
EXISTING SURFACE GRADE ELEVATION: 753.31
PAVING CONDITION PRIOR TO WORK: GOOD
PAVING THICKNESS AND TYPE: 0.35' BLACKTOP
SOIL TYPE: ROCK & CLAY FIELD CONDITIONS: DRY
COLOR OF RIBBON INSTALLED IN TEST HOLE: N/A

FIELD REMARKS: N/A

UTILITY REMARKS: N/A



UTILITY LEGEND

GAS	— G —	TEST HOLE	— ELEC. P.B. —
WATER	— W —	FIRE HYDRANT	— POWER POLE —
TELEPHONE	— T —	WATER VALVE	— POWER/LIGHT —
ELECTRIC	— E —	GAS MARKER	— LIGHT POLE —
SANITARY SEWER	— SAN —	GAS VALVE	— SAN M.H. —
STORM SEWER	— ST —	F.O. MARKER	— TRAFFIC P.B. —
FIBER OPTIC	— FO —	UNKNOWN P.B.	— GROUND SHOT —
CABLE TV	— CTV —		
TRAFFIC	— TR —		

I, Charles W. Price, JR. do hereby certify that the positioning of the utility facilities provided utilizing the Quality Levels was performed in accordance with ODOT's SULS specifications.

Charles W. Price, JR., P.S.

DATE 9/18/2019

CHARLES W.
PRICE, JR.
S-7825

REGISTERED
PROFESSIONAL SURVEYOR



National Engineering &
Architectural Services, INC. (NEAS)
2800 Corporate Exchange Dr.
Suite 240
Columbus, Ohio 43231
Office: (614) 714-0299
Fax: (614) 714-0251

LEVEL A TEST HOLE CERTIFICATION FORM

PROJECT NAME: FRA-70-14.05 PROJECT 4B, PID#: 96053
NEAS PROJECT #: 18-0085
PROJECT LOCATION (CTY., CITY, ST.): FRA., COLUMBUS, I-70 WB
FOREMAN/TRUCK: N. MILLER, C. OTTEN, N.L., B.J.
DATE OF EXCAVATION: 09/03/19
WEATHER CONDITIONS: 70° CLEAR (NIGHT)

TEST HOLE #: 19
UTILITY TO BE LOCATED: SANITARY LINE (NOT FOUND)

CONTROL POINT: CP8 (GROUND)
NORTHING: 711863.6200
EASTING: 1829079.268
ELEVATION: 743.37

SIZE OF UTILITY: N/A
MATERIAL OF FOUND UTILITY: N/A
THE UTILITY N/A IN GOOD CONDITION
THERE WERE NOT ADDITIONAL UTILITIES IN THE TEST HOLE
SURVEYED ELEVATION BOTTOM OF TEST HOLE: 727.05
SURVEYED ELEVATION BOTTOM OF UTIL (IF REQ.): N/A
SURVEYED NORTHING BOTTOM OF HOLE: 711848.0660 (GROUND)
SURVEYED EASTING BOTTOM OF HOLE: 1829113.2910 (GROUND)
DEPTH OF BOTTOM OF HOLE FROM SURFACE: 8.0' DEPTH
DIRECTION OF UTILITY LINE: N/A
PHOTO IMAGE NUMBERS: 929-930

TEST HOLE LOCATION (PAV., BERM, ETC): GRASS SHOULDER
EXISTING SURFACE GRADE ELEVATION: 735.07
PAVING CONDITION PRIOR TO WORK: N/A
PAVING THICKNESS AND TYPE: N/A
SOIL TYPE: ROCK & DIRT FIELD CONDITIONS: DRY
COLOR OF RIBBON INSTALLED IN TEST HOLE: N/A

FIELD REMARKS: DUG TO 8.0' & PROBED TO 9.0'. NO UTILITY FOUND

UTILITY REMARKS: N/A



LEVEL A TEST HOLE #19
(BOTTOM OF TEST HOLE)
TOP OF GROUND = 735.07
BOTTOM OF TEST HOLE = 727.05
NORTHING = 711848.0660 (GROUND)
EASTING = 1829113.2910 (GROUND)

UTILITY LEGEND

GAS	— G —	TEST HOLE	— ELEC. P.B. —
WATER	— W —	FIRE HYDRANT	— POWER POLE —
TELEPHONE	— T —	WATER VALVE	— POWER/LIGHT —
ELECTRIC	— E —	GAS MARKER	— LIGHT POLE —
SANITARY SEWER	— SAN —	GAS VALVE	— SAN M.H. —
STORM SEWER	— SS —	F.O. MARKER	— TRAFFIC P.B. —
FIBER OPTIC	— FO —	UNKNOWN P.B.	— GROUND SHOT —
CABLE TV	— CTV —		
TRAFFIC	— TR —		

I, Charles W. Price, JR. do hereby certify that
the positioning of the utility facilities
provided utilizing the Quality Levels was
performed in accordance with ODOT's SMS
specifications.

Charles W. Price, JR., P.S.

DATE 9/18/2019

CHARLES W.
PRICE, JR.
S-7825

REGISTERED
PROFESSIONAL SURVEYOR



National Engineering &
Architectural Services, INC. (NEAS)
2800 Corporate Exchange Dr.
Suite 240
Columbus, Ohio 43231
Office: (614) 714-0299
Fax: (614) 714-0251

LEVEL A TEST HOLE CERTIFICATION FORM

PROJECT NAME: FRA-70-14.05 PROJECT 4B, PID#: 96053
NEAS PROJECT #: 18-0085
PROJECT LOCATION (CTY., CITY, ST.): FRA., COL., I-70 E.B.
FOREMAN/TRUCK: N. MILLER, C. OTTEN, N.L., B.J.
DATE OF EXCAVATION: 09/04/19
WEATHER CONDITIONS: 70° CLEAR (NIGHT)

TEST HOLE #: 20
UTILITY TO BE LOCATED: STORM LINE (FOUND)

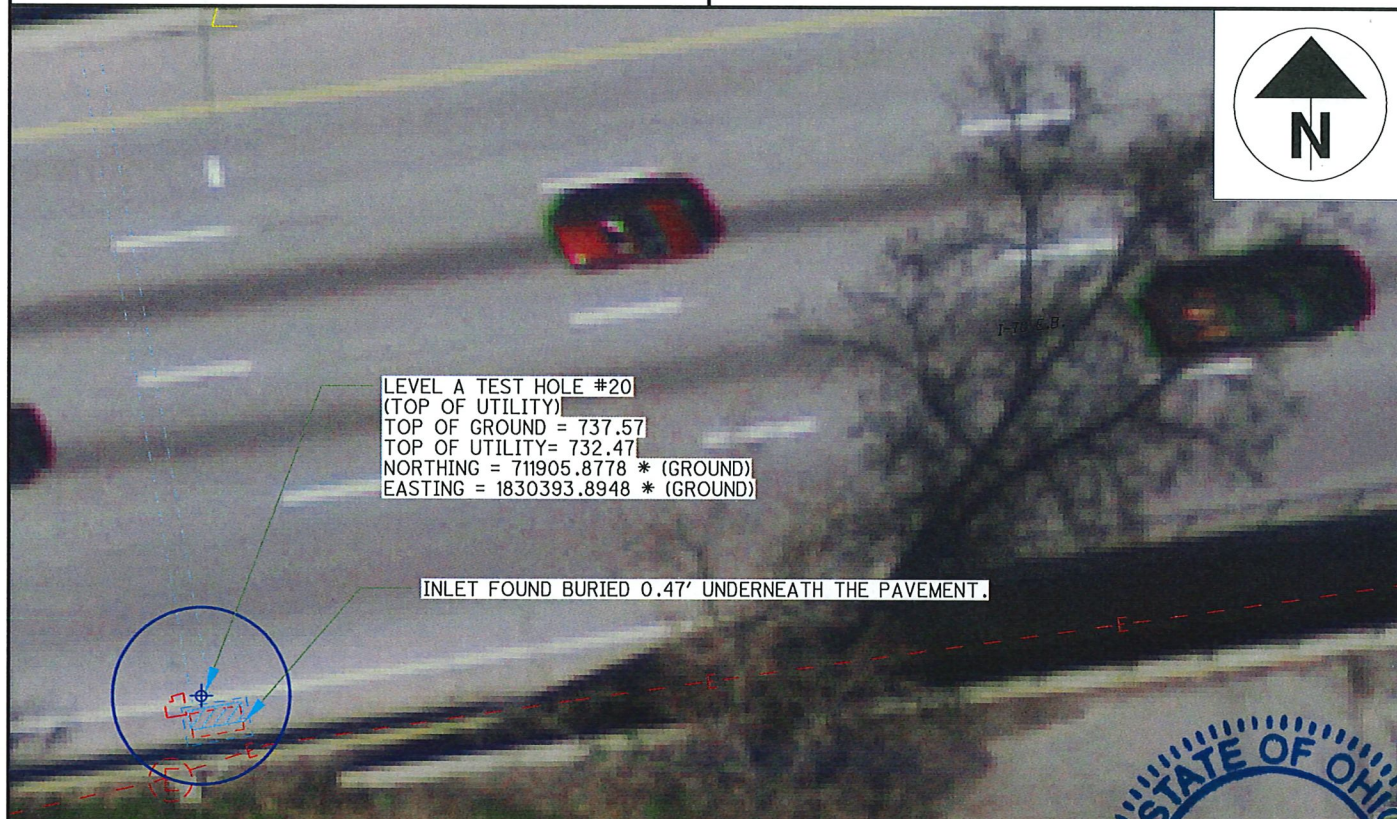
CONTROL POINT: CP1020 (GROUND)
NORTHING: 711894.3120
EASTING: 1830352.6430
ELEVATION: 737.35

SIZE OF UTILITY: 21"
MATERIAL OF FOUND UTILITY: CONCRETE
THE UTILITY WAS IN GOOD CONDITION
THERE WERE NOT ADDITIONAL UTILITIES IN THE TEST HOLE
SURVEYED ELEVATION TOP OF UTILITY: 732.47
SURVEYED ELEVATION BOTTOM OF UTIL (IF REQ.): N/A
SURVEYED NORTHING TOP OF UTILITY: 711905.8778 * (GROUND)
SURVEYED EASTING TOP OF UTILITY: 1830393.8948 * (GROUND)
DEPTH OF TOP OF UTILITY FROM SURFACE: 5.1' DEPTH
DIRECTION OF UTILITY LINE: NORTHEAST TO SOUTHWEST
PHOTO IMAGE NUMBERS: 933-934

TEST HOLE LOCATION (PAV., BERM, ETC): PAVED SHOULDER
EXISTING SURFACE GRADE ELEVATION: 737.57
PAVING CONDITION PRIOR TO WORK: GOOD
PAVING THICKNESS AND TYPE: 1.0' BLACKTOP, 0.5' CONCRETE
SOIL TYPE: ROCK & DIRT FIELD CONDITIONS: DRY
COLOR OF RIBBON INSTALLED IN TEST HOLE: N/A

FIELD REMARKS: INLET FOUND BURIED 0.47' UNDERNEATH THE PAVEMENT.

UTILITY REMARKS: * CENTERLINE LOCATION CALCULATED FROM A SURVEY SHOT ON THE WEST SIDE OF THE PIPE, *



UTILITY LEGEND

GAS — G —
WATER — W —
TELEPHONE — T —
ELECTRIC — E —
SANITARY SEWER — SAN —
STORM SEWER — S —
FIBER OPTIC — FO —
CABLE TV — CT —
TRAFFIC — TR —

TEST HOLE
FIRE HYDRANT
WATER VALVE
GAS MARKER
GAS VALVE
F.O. MARKER
UNKNOWN P.B.

ELEC. P.B.
POWER POLE
POWER/LIGHT
LIGHT POLE
SAN M.H.
TRAFFIC P.B.
GROUND SHOT

I, Charles W. Price, JR. do hereby certify that the positioning of the utility facilities provided utilizing the Quality Levels was performed in accordance with ODOT's SUB specifications.

Charles W. Price, JR., P.S.

DATE 9/18/2019

CHARLES W.
PRICE, JR.
S-7825

